



Benham & Reeves

Lismore Boulevard, Colindale, NW9

£542 per week, £2,349 per month + fees

 3 Bedrooms  2 Bathrooms  Unfurnished

Bright luxury apartment in a new development set in over 9 acres of landscaped gardens, surrounding a 4-acre park, in North West London. The property is situated a short walk from Colindale Underground Station (Northern Line) EPC - B

****MORE PROPERTIES TO OFFER****

Please [click here](#) for full detail

Property features

Selection of Amenities On-site | New Development | Private Balcony | Unfurnished | Situated within Colindale Gardens | EPC -B | 24 Hour Concierge | Bright and Spacious Apartment | Resident's Gymnasium, Sauna and Steam room | 0.4 miles to Colindale Underground Station

For more information about this property,
please call our Colindale branch on

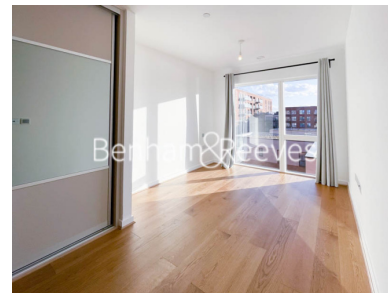
020 8732 7980

Redress & Client Money Protection :

Benham and Reeves are members of The Property Ombudsman redress scheme and have Client Money protection with ARLA Propertymark. You can find more information on our website at <https://www.benhamandreeves.com/membership/>



Benham & Reeves



Lismore Boulevard, Colindale, NW9

£542 per week, £2,349 per month + fees

www.benhams.com

Score	Energy rating	Current	Potential
92+	A		
81-91	B	85 B	85 B
69-80	C		
55-68	D		
39-54	E		
21-38	F		
1-20	G		

London branches open six days a week Mon - Sat

Canary Wharf | City | Colindale | Dartmouth Park | Ealing | Fulham
Hammersmith | Hampstead | Highgate | Hyde Park | Kensington | Kew
Knightsbridge | Nine Elms | Shoreditch | Southall | Surrey Quays
Wapping | Wembley | White City | Woolwich

International offices

China | Hong Kong SAR | India | Indonesia | Qatar | Malaysia | Middle East | Pakistan
Singapore | South Africa | Thailand | Turkey

