



Benham & Reeves

## **Thonrey Close, Colindale, NW9**

£554 per week, £2,401 per month + fees

 2 Bedrooms    2 Bathrooms    Furnished

Modern 3rd floor apartment situated within a quiet development a short walk (0.3 miles) from Colindale Underground Station (Northern Line) EPC - B

Please [click here](#) for full detail

## Property features

**New Build Apartment | Private Balcony | New Development | Situated within Colindale Gardens | Available to Rent end June | EPC-B | Furnished | On-site Gym | 24-Hour Concierge | 0.3 miles to Colindale Underground Station**

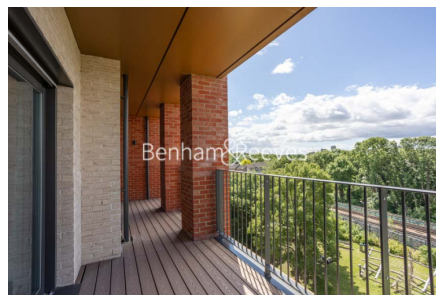
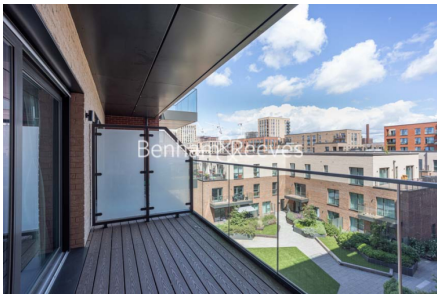
For more information about this property,  
please call our Colindale branch on

**020 8732 7980**



Redress & Client Money Protection :  
Benham and Reeves are members of The Property Ombudsman redress scheme and have Client Money protection with ARLA Propertymark.  
You can find more information on our website at <https://www.benhamandreeves.com/membership/>

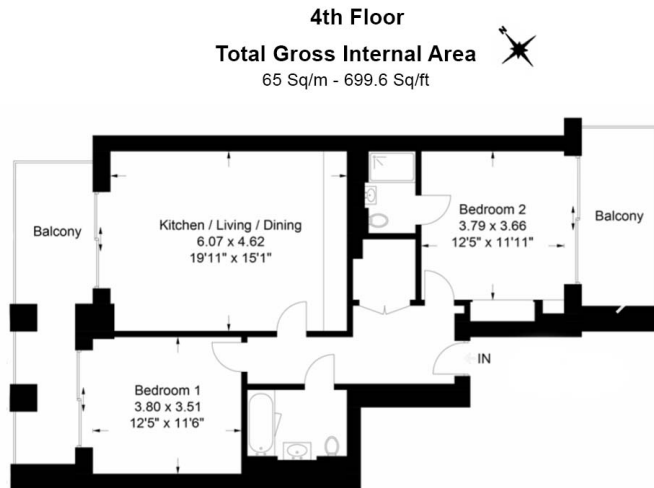
**Benham & Reeves**



# Thonrey Close, Colindale, NW9

£554 per week, £2,401 per month + fees

www.benhams.com



Floor Plan measurements are approximate and are for illustrative purposes only. While we do not doubt the floor plans accuracy, we make no guarantee, warranty or representation as to the accuracy and completeness of the floor plan.

Score	Energy rating	Current	Potential
92+	A		
81-91	B	86   B	86   B
69-80	C		
55-68	D		
39-54	E		
21-38	F		
1-20	G		

## London branches open six days a week Mon - Sat

Canary Wharf | City | Colindale | Dartmouth Park | Ealing | Fulham  
Hammersmith | Hampstead | Highgate | Hyde Park | Kensington | Kew  
Knightsbridge | Nine Elms | Shoreditch | Southall | Surrey Quays  
Wapping | Wembley | White City | Woolwich

## International offices

China | Hong Kong SAR | India | Indonesia | Qatar | Malaysia | Middle East | Pakistan  
Singapore | South Africa | Thailand | Turkey



Benham & Reeves