



Benham & Reeves

Alexander Place, South Kensington, SW7

£2,350 per week, £10,183 per month + fees

 3 Bedrooms  3 Bathrooms 
Furnished/UnFurnished

This elegant 1,868 sq ft Three-Bedroom Grade II Listed TOWNHOUSE is located on the distinguished borders of South Kensington & Knightsbridge. Grand in stature, the house is ideal for a couple, or family, and enjoys a prized end of terrace position and private PATIO GARDEN.

Please [click here](#) for full detail

Property features

3 Bedrooms | 3 Bathrooms | 2 Receptions | Patio Garden | 1,868 sq ft | Eat-In Fitted Kitchen | Study | Furnished/Un-Furnished | Nearby South Kensington Underground Station

For more information about this property,
please call our Knightsbridge branch on

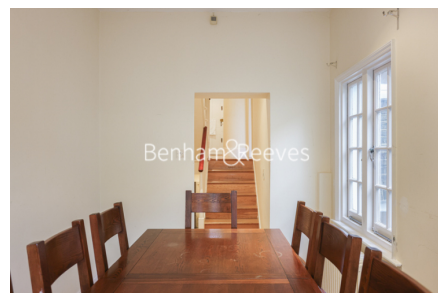
020 7581 2112

Redress & Client Money Protection :

Benham and Reeves are members of The Property Ombudsman redress scheme and have Client Money protection with ARLA Propertymark. You can find more information on our website at <https://www.benhamandreeves.com/membership/>



Benham&Reeves



Alexander Place, South Kensington, SW7

£2,350 per week, £10,183 per month + fees

www.benhams.com



London branches open six days a week Mon - Sat

Canary Wharf | City | Colindale | Dartmouth Park | Ealing | Fulham
Hammersmith | Hampstead | Highgate | Hyde Park | Kensington | Kew
Knightsbridge | Nine Elms | Shoreditch | Southall | Surrey Quays
Wapping | Wembley | White City | Woolwich

International offices

China | Hong Kong SAR | India | Israel | Malaysia | Middle East | Pakistan
Qatar | Singapore | South Africa | Thailand | Turkey



Benham & Reeves