



Benham & Reeves

**Doulton House, Fulham, SW6**

£550 per week, £2,383 per month + fees

 1 Bedroom    1 Bathroom    Furnished

A spacious luxury contemporary third floor apartment with full suite of amenities, close to the River Thames. Just moments away from Imperial Wharf Overground and Fulham Broadway Station.

Please [click here](#) for full detail

## Property features

**1 Bedroom | 1 Bathroom | Reception | Furnished | Kitchen | EPC-B | Comfort Cooling | Spa | Nearby Chelsea and King's Road**

For more information about this property,  
please call our Fulham branch on

**020 7348 7620**

Redress & Client Money Protection :

Benham and Reeves are members of The Property Ombudsman redress scheme and have Client Money protection with ARLA Propertymark. You can find more information on our website at <https://www.benhams.com/membership/>



Benham & Reeves

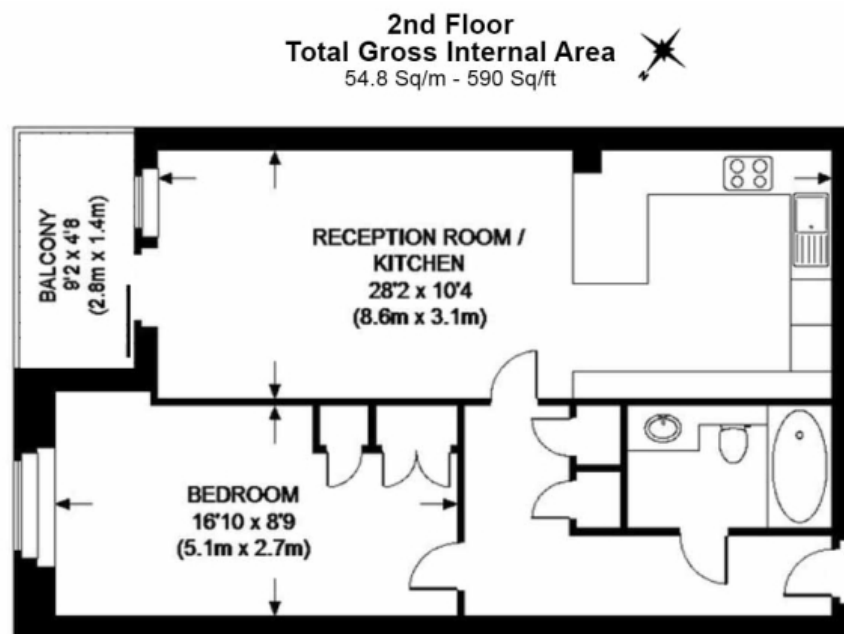




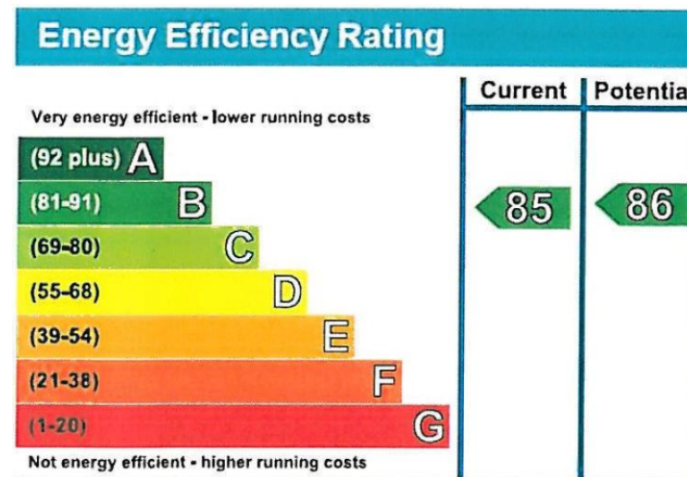
# Doulton House, Fulham, SW6

£550 per week, £2,383 per month + fees

[www.benhams.com](http://www.benhams.com)



Floor Plan measurements are approximate and are for illustrative purposes only. While we do not doubt the floor plans accuracy, we make no guarantee, warranty or representation as to the accuracy and completeness of the floor plan.



## London branches open six days a week Mon - Sat

Canary Wharf | City | Colindale | Dartmouth Park | Ealing | Fulham  
Hammersmith | Hampstead | Highgate | Hyde Park | Kensington | Kew  
Knightsbridge | Nine Elms | Shoreditch | Southall | Surrey Quays  
Wapping | Wembley | White City | Woolwich

## International offices

China | Hong Kong SAR | India | Israel | Malaysia | Middle East | Pakistan  
Qatar | Singapore | South Africa | Thailand | Turkey



Benham & Reeves