



Benham & Reeves

## **Boulevard Drive, Colindale, NW9**

£485 per week, £2,102 per month + fees

 2 Bedrooms    2 Bathrooms    Furnished

**\*\*ON SITE AGENT\*\***

Luxury furnished 2nd floor apartment with private terrace and underground parking situated within a desirable development in North West London. Ideally located a short walk (0.4 miles) from Colindale Underground station (Northern Line) EPC - C

**\*\*MORE PROPERTIES TO OFFER\*\***

Please [click here](#) for full detail

## Property features

**Selection of Amenities | Well Tended Communal Gardens | Private Terrace | Tastefully Furnished | Situated within Beaufort Park, Colindale NW9 | EPC-C | Fee Gym, Swimming Pool, Spa and Jacuzzi | Water Rates Included | Secure Underground Unallocated Parking | 0.4 miles to Colindale Underground Station**

For more information about this property,  
please call our Colindale branch on

**020 8732 7980**

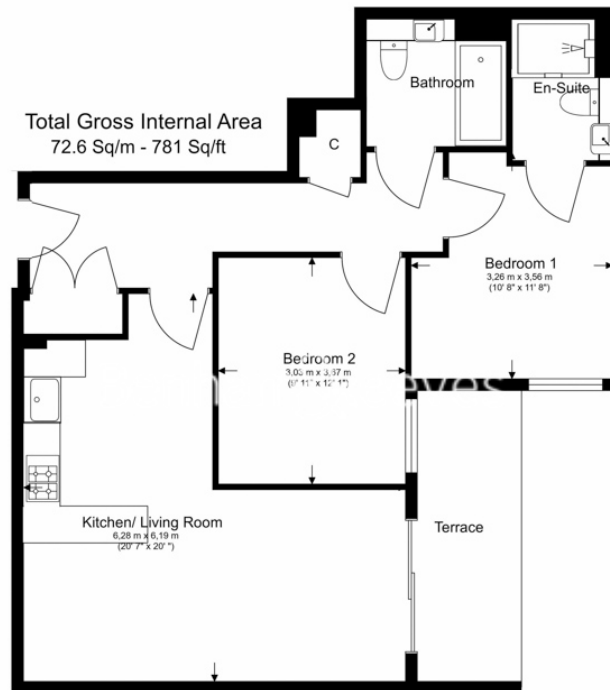




# Boulevard Drive, Colindale, NW9

£485 per week, £2,102 per month + fees

[www.benhams.com](http://www.benhams.com)



Floor Plan measurements are approximate and are for illustrative purposes only. While we do not doubt the floor plans accuracy, we make no guarantee, warranty or representation as to the accuracy and completeness of the floor plan.

## London branches open six days a week Mon - Sat

Canary Wharf | City | Colindale | Dartmouth Park | Ealing | Fulham  
Hammersmith | Hampstead | Highgate | Hyde Park | Kensington | Kew  
Knightsbridge | Nine Elms | Shoreditch | Southall | Surrey Quays  
Wapping | Wembley | White City | Woolwich

## International offices

China | Hong Kong SAR | India | Indonesia | Qatar | Malaysia | Middle East | Pakistan  
Singapore | South Africa | Thailand | Turkey



Benham & Reeves