



Benham & Reeves

Kew Bridge West, Brentford, TW8

£450 per week, £1,950 per month + fees

 1 Bedroom  1 Bathroom  Furnished

Modern apartment, with underground parking, is situated in a sought-after riverside development located in leafy Kew. Within in easy walking distance from Kew Bridge Overground station which runs services to Waterloo and Victoria in half an hour. Easily accessed, the A40/M4 offers excellent links for drivers in and out of London.

Please [click here](#) for full detail

Property features

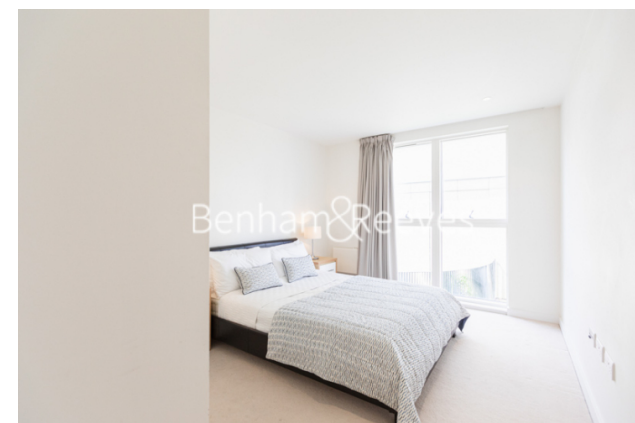
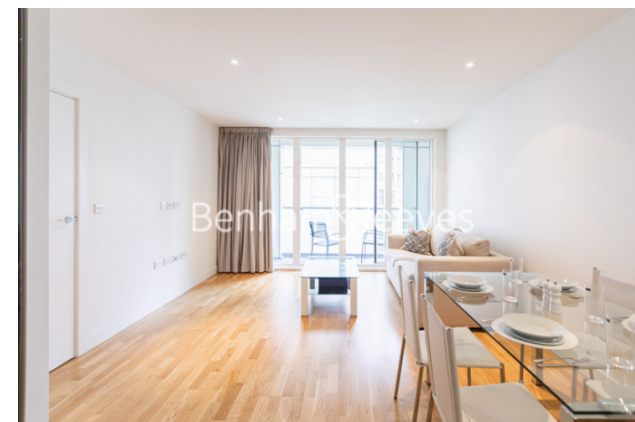
24 hrs concierge | Underground parking | Residents gym | Riverside location | Storage cupboards | EPC-C | Wood floors | Private balcony | Quick access to m4 | Kew bridge station

For more information about this property,
please call our Kew branch on

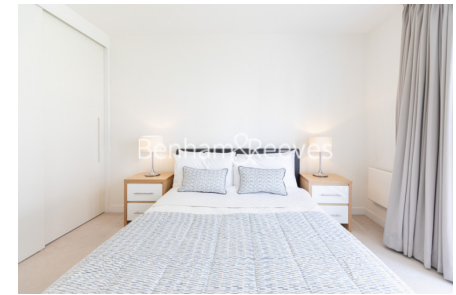
020 8326 1960

Redress & Client Money Protection :

Benham and Reeves are members of The Property Ombudsman redress scheme and have Client Money protection with ARLA Propertymark. You can find more information on our website at <https://www.benhamandreeves.com/membership/>



Benham & Reeves



Kew Bridge West, Brentford, TW8

£450 per week, £1,950 per month + fees

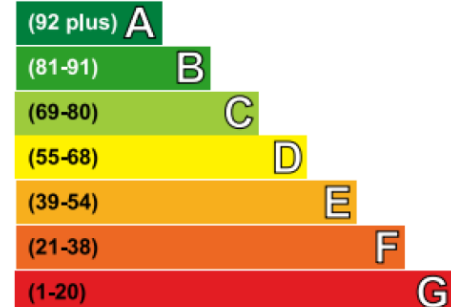
www.benhams.com



Floor Plan measurements are approximate and are for illustrative purposes only. While we do not doubt the floor plans accuracy, we make no guarantee, warranty or representation as to the accuracy and completeness of the floor plan.

Energy Efficiency Rating

Very energy efficient - lower running costs



Not energy efficient - higher running costs

Current	Potential
80	80

London branches open six days a week Mon - Sat

Canary Wharf | City | Colindale | Dartmouth Park | Ealing | Fulham
Hammersmith | Hampstead | Highgate | Hyde Park | Kensington | Kew
Knightsbridge | Nine Elms | Shoreditch | Southall | Surrey Quays
Wapping | Wembley | White City | Woolwich

International offices

China | Hong Kong SAR | India | Israel | Malaysia | Middle East | Pakistan
Qatar | Singapore | South Africa | Thailand | Turkey



Benham & Reeves