



Benham & Reeves

**Lensbury Avenue, Imperial Wharf, SW6**

£725 per week, £3,142 per month + fees

 2 Bedrooms    2 Bathrooms     
Furnished/UnFurnished

Contemporary and spacious air-conditioned ground floor flat with 24-hour security and direct River views, situated in a prestigious riverside development in Fulham. Imperial Wharf Station is approximately 0.1 miles away.

Please [click here](#) for full detail

## Property features

**2 Bedrooms | 2 Bathrooms | Open Plan Reception | Furnished or Unfurnished | Fitted Kitchen | EPC-D | Gym Balcony | 24 Hour concierge | Nearby Imperial Wharf Overground station**

For more information about this property,  
please call our Fulham branch on

**020 7348 7620**

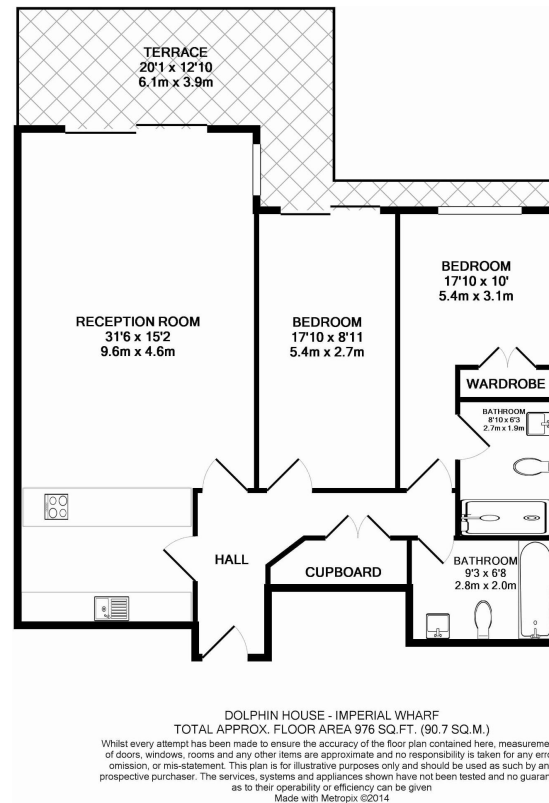




# Lensbury Avenue, Imperial Wharf, SW6

£725 per week, £3,142 per month + fees

[www.benhams.com](http://www.benhams.com)



## London branches open six days a week Mon - Sat

Canary Wharf | City | Colindale | Dartmouth Park | Ealing | Fulham  
Hammersmith | Hampstead | Highgate | Hyde Park | Kensington | Kew  
Knightsbridge | Nine Elms | Shoreditch | Southall | Surrey Quays  
Wapping | Wembley | White City | Woolwich

## International offices

China | Hong Kong SAR | India | Israel | Malaysia | Middle East | Pakistan  
Qatar | Singapore | South Africa | Thailand | Turkey



Benham & Reeves