



Benham & Reeves

## **Beaufort Square, Colindale, NW9**

£510 per week, £2,210 per month + fees

 2 Bedrooms    2 Bathrooms    Furnished

**\*\*ON SITE AGENT\*\***

Stylish 3rd floor apartment, with secure underground parking space situated within a desirable development with excellent amenities in North West London. Ideally located a short walk (0.4 miles) from Colindale Underground Station (Northern Line). EPC - C

**\*\*MORE PROPERTIES TO OFFER\*\***

Please [click here](#) for full detail

## Property features

**Selection of Amenities On-site | Well Tended Communal Gardens | Private Balcony | Tastefully Furnished | Situated within Beaufort Park, Colindale NW9 | EPC-C | 24 Hour Estate Management | Secure Underground Unallocated Parking | Fee Gym, Swimming Pool, Spa and Jacuzzi | 0.4 miles to Colindale Underground Station**

For more information about this property,  
please call our Colindale branch on

**020 8732 7980**



Redress & Client Money Protection :

Benham and Reeves are members of The Property Ombudsman redress scheme and have Client Money protection with ARLA Propertymark. You can find more information on our website at <https://www.benham.com/membership/>

**Benham & Reeves**

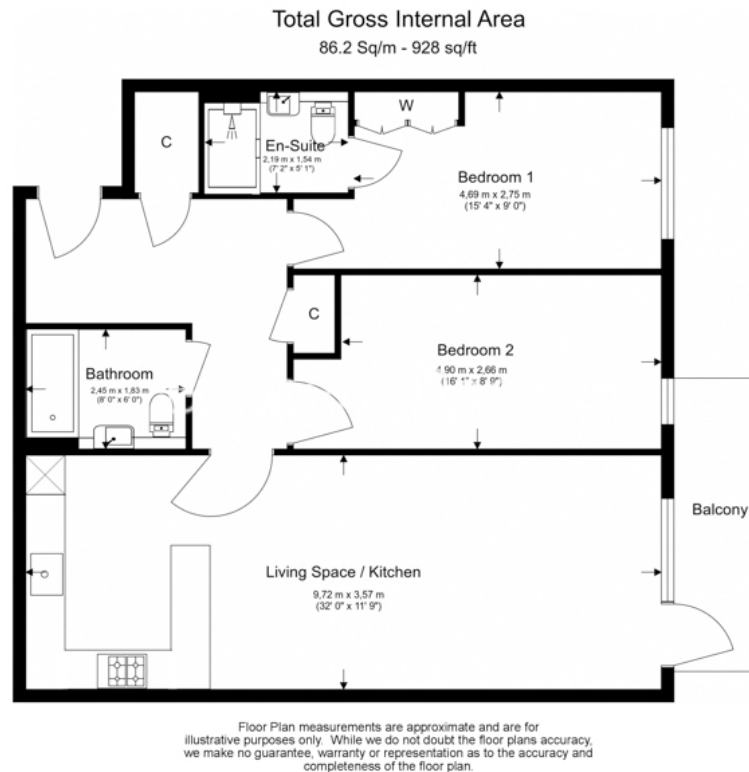




# Beaufort Square, Colindale, NW9

£510 per week, £2,210 per month + fees

[www.benhams.com](http://www.benhams.com)



## London branches open six days a week Mon - Sat

Canary Wharf | City | Colindale | Dartmouth Park | Ealing | Fulham  
Hammersmith | Hampstead | Highgate | Hyde Park | Kensington | Kew  
Knightsbridge | Nine Elms | Shoreditch | Southall | Surrey Quays  
Wapping | Wembley | White City | Woolwich

## International offices

China | Hong Kong SAR | India | Indonesia | Qatar | Malaysia | Middle East |  
Singapore | South Africa | Thailand | Turkey



Benham & Reeves