



Benham&Reeves

Henrietta Steet, Covent Garden, WC2E

£1,962 per week, £8,500 per month + fees

 3 Bedrooms  3 Bathrooms  Furnished

A large, exceptional apartment with a stunning South facing garden terrace located on one of the premier streets adjoining Covent Garden's iconic Piazza.

Please [click here](#) for full detail

Property features

Large split level three-bedroom apartment | Three en-suite bathrooms and guest WC | Large Victorian living room | Fitted Kitchen with dining area | Exceptionally furnished | EPC-C | South-facing landscaped terrace | Excellent Location | Nearby Holborn Station

For more information about this property,
please call our City branch on

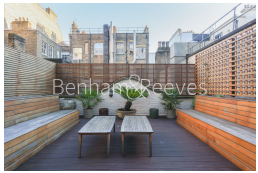
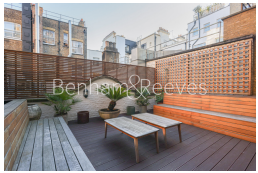
020 7213 9700

Redress & Client Money Protection :

Benham and Reeves are members of The Property Ombudsman redress scheme and have Client Money protection with ARLA Propertymark. You can find more information on our website at <https://www.benhams.com/membership/>



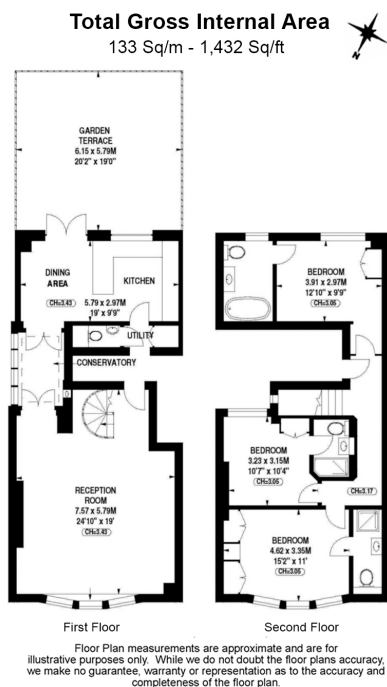
Benham&Reeves



Henrietta Steet, Covent Garden, WC2E

£1,962 per week, £8,500 per month + fees

www.benhams.com



Score	Energy rating	Current	Potential
92+	A		
81-91	B		83 B
69-80	C	76 C	
55-68	D		
39-54	E		
21-38	F		
1-20	G		

London branches open six days a week Mon - Sat

Canary Wharf | City | Colindale | Dartmouth Park | Ealing | Fulham
Hammersmith | Hampstead | Highgate | Hyde Park | Kensington | Kew
Knightsbridge | Nine Elms | Shoreditch | Southall | Surrey Quays
Wapping | Wembley | White City | Woolwich

International offices

China | Hong Kong SAR | India | Indonesia | Qatar | Malaysia | Middle East | Pakistan
Singapore | South Africa | Thailand | Turkey



Benham & Reeves