



Benham & Reeves

Fellow Square, Cricklewood, NW2

£347 per week, £1,504 per month + fees

 1 Bedroom  1 Bathroom  Furnished

A stylish open plan apartment with gated underground parking situated in a recently built modern development close to the transport links of Cricklewood.

Please [click here](#) for full detail

Property features

Brand new development | Two Balcony's | Wood floors | Lift access | Open plan kitchen | EPC-B | Use of Gymnasium | Concierge | Parking | Short walk to Cricklewood Station

For more information about this property,
please call our Hampstead branch on

020 7435 9681

Redress & Client Money Protection :

Benham and Reeves are members of The Property Ombudsman redress scheme and have Client Money protection with ARLA Propertymark. You can find more information on our website at <https://www.benhams.com/membership/>



Benham & Reeves

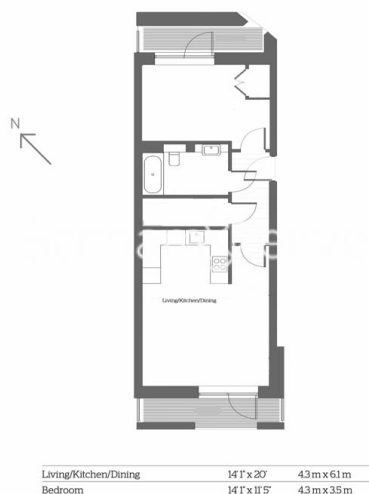


Fellow Square, Cricklewood, NW2

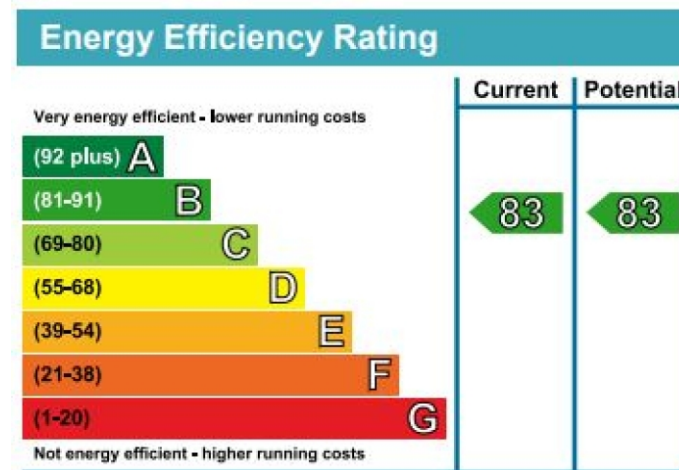
£347 per week, £1,504 per month + fees

www.benhams.com

4th Floor
Approx gross internal area: 580sq/ft - 54sq/m



Whilst every attempt has been made to ensure the accuracy of the floor plan contained here, measurements of doors, windows, rooms and any other items are approximate and no responsibility is taken for any error, omission, or mis-statement. This plan is for illustrative purposes only and should be used as such by any prospective purchaser. The services, systems and appliances shown have not been tested and no guarantee as to their operability or efficiency can be given.
Made with Metropix G2016



London branches open six days a week Mon - Sat

Canary Wharf | City | Colindale | Dartmouth Park | Ealing | Fulham
Hammersmith | Hampstead | Highgate | Hyde Park | Kensington | Kew
Knightsbridge | Nine Elms | Shoreditch | Southall | Surrey Quays
Wapping | Wembley | White City | Woolwich

International offices

China | Hong Kong SAR | India | Indonesia | Qatar | Malaysia | Middle East | Pakistan
Singapore | South Africa | Thailand | Turkey



Benham & Reeves