



Benham & Reeves

Queens Wharf, Crisp Road, W6

£675 per week, £2,925 per month + fees

 1 Bedroom  1 Bathroom  Furnished

Luxurious elite 3rd floor apartment situated in a modern development with a direct River view from the private balcony in Hammersmith.

Please [click here](#) for full detail

Property features

Stunning 1 Master Bedroom Apartment with a Direct River View | Fully Fitted Kitchen Integrated with Well-Known Appliances | Private Balcony with a Direct River View | 24 Hr Concierge / 24 Hr Security / Communal Gardens | Air Ventilation / Underfloor Heating / Air Conditioning | EPC-B | Spacious Queen Size Master Bedroom with Built-in Wardrobe | Luxurious Modern Bathroom | Neutral Decoration Throughout with Quality Furniture | Nearby Hammersmith Underground Station

For more information about this property,
please call our Hammersmith branch on

020 8600 0960



Redress & Client Money Protection :

Benham and Reeves are members of The Property Ombudsman redress scheme and have Client Money protection with ARLA Propertymark. You can find more information on our website at <https://www.benhams.com/membership/>

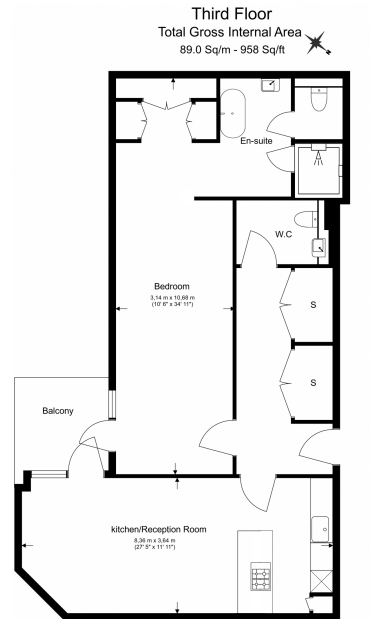
Benham & Reeves



Queens Wharf, Crisp Road, W6

£675 per week, £2,925 per month + fees

www.benhams.com



Floor Plan measurements are approximate and are for illustrative purposes only. While we do not doubt the floor plans accuracy, we make no guarantee, warranty or representation as to the accuracy and completeness of the floor plan.

Score	Energy rating	Current	Potential
92+	A		
81-91	B	86 B	86 B
69-80	C		
55-68	D		
39-54	E		
21-38	F		
1-20	G		

London branches open six days a week Mon - Sat

Canary Wharf | City | Colindale | Dartmouth Park | Ealing | Fulham
Hammersmith | Hampstead | Highgate | Hyde Park | Kensington | Kew
Knightsbridge | Nine Elms | Shoreditch | Southall | Surrey Quays
Wapping | Wembley | White City | Woolwich

International offices

China | Hong Kong SAR | India | Indonesia | Qatar | Malaysia | Middle East |
Singapore | South Africa | Thailand | Turkey



Benham & Reeves