



Benham & Reeves

## **Dartmouth Park Hill, Dartmouth Park, NW5**

£475 per week, £2,058 per month + fees

🛏️ 2 Bedrooms    🚿 1 Bathroom    🛋️ Part-furnished

A charming garden apartment, with private entrance, situated in a handsome semi-detached, double fronted Victorian conversion. Perfectly positioned close to Hampstead Heath, the amenities of Highgate Village and is within walking distance from Archway and Tufnell Park Tube stations.

Please [click here](#) for full detail

## Property features

**2 Bedrooms | 1 Bathroom | Reception Room | Part Furnished | Fitted Kitchen | EPC-D | Private Garden | Own Entrance | Close to Hampstead Heath | Close to Archway and Tufnell Park Tube Stations**

For more information about this property,  
please call our Highgate branch on

**020 8341 2335**

Redress & Client Money Protection :

Benham and Reeves are members of The Property Ombudsman redress scheme and have Client Money protection with ARLA Propertymark. You can find more information on our website at <https://www.benhamandreeves.com/membership/>



Benham&Reeves

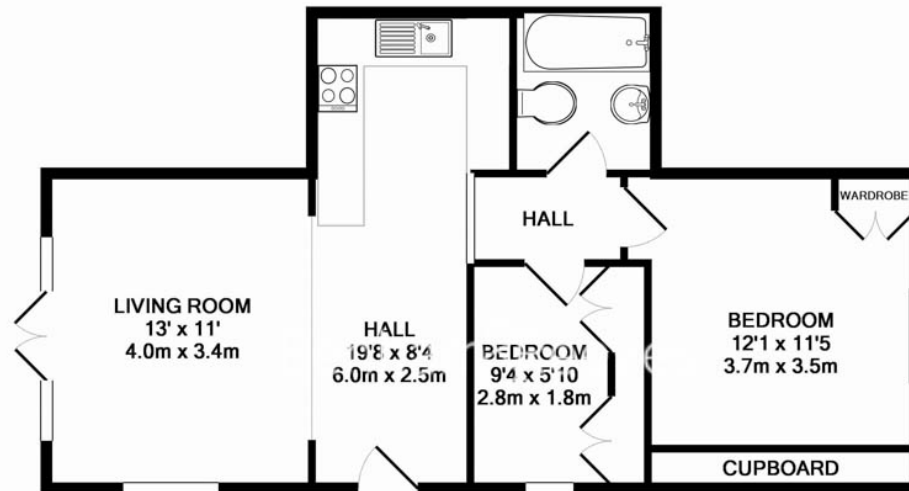




# Dartmouth Park Hill, Dartmouth Park, NW5

£475 per week, £2,058 per month + fees

[www.benhams.com](http://www.benhams.com)



F2.75DPH.NW5  
TOTAL APPROX. FLOOR AREA 564 SQ.FT. (52.4 SQ.M.)  
Whilst every attempt has been made to ensure the accuracy of the floor plan contained here, measurements of doors, windows, rooms and any other items are approximate and no responsibility is taken for any error, omission, or mis-statement. This plan is for illustrative purposes only and should be used as such by any prospective purchaser. The services, systems and appliances shown have not been tested and no guarantee as to their operability or efficiency can be given  
Made with Metropix ©2016

Energy Efficiency Rating		
	Current	Potential
Very energy efficient - lower running costs		
(92 plus) A		
(81-91) B		
(69-80) C		
(55-68) D	63	69
(39-54) E		
(21-38) F		
(1-20) G		
Not energy efficient - higher running costs		
England & Wales	EU Directive 2002/91/EC	

## London branches open six days a week Mon - Sat

Canary Wharf | City | Colindale | Dartmouth Park | Ealing | Fulham  
Hammersmith | Hampstead | Highgate | Hyde Park | Kensington | Kew  
Knightsbridge | Nine Elms | Shoreditch | Southall | Surrey Quays  
Wapping | Wembley | White City | Woolwich

## International offices

China | Hong Kong SAR | India | Israel | Malaysia | Middle East | Pakistan  
Qatar | Singapore | South Africa | Thailand | Turkey



Benham & Reeves