



Benham & Reeves

**The Manor, Davies Street, Mayfair, W1**

£4,495 per week, £19,478 per month + fees

 3 Bedrooms    3 Bathrooms    Unfurnished

A unique 2,668 sq ft THREE-BEDROOM apartment integrated with a distinctive Rooftop Veranda in a sought after & desirable portered block THE MANOR on Davies Street in prestigious MAYFAIR. The property is located moments from Bond Street & Green Park Underground Stations. UN-FURNISHED Only.

Please [click here](#) for full detail

## Property features

**3 Bedrooms | 3 Bathrooms | Large Double Aspect Reception | Furn/Unfurn | Fitted Kitchen | EPC-D | Separate Utility Room | Private Large Roof Veranda & Terrace | Bond Street & Marble Arch Underground Stations**

For more information about this property, please call our Knightsbridge branch on

**020 7581 2112**

Redress & Client Money Protection :

Benham and Reeves are members of The Property Ombudsman redress scheme and have Client Money protection with ARLA Propertymark. You can find more information on our website at <https://www.benhams.com/membership/>



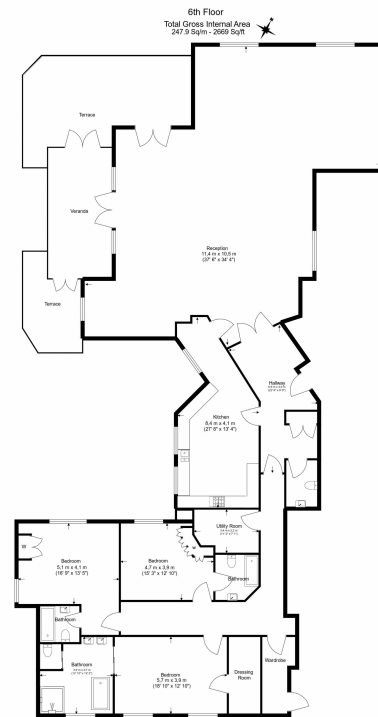
Benham & Reeves



# The Manor, Davies Street, Mayfair, W1

£4,495 per week, £19,478 per month + fees

www.benhams.com



Floor Plan measurements are approximate and are for illustrative purposes only. While we do not doubt the floor plans accuracy, we make no guarantee, warranty or representation as to the accuracy and completeness of the floor plan.

| Energy Efficiency Rating                           |                         |           |
|--|-------------------------|-----------|
|  | Current                 | Potential |
| <i>Very energy efficient - lower running costs</i> |                         |           |
| (92-100) <b>A</b>                                  |                         |           |
| (81-91) <b>B</b>                                   |                         |           |
| (69-80) <b>C</b>                                   |                         |           |
| (55-68) <b>D</b>                                   | 57                      | 69        |
| (39-54) <b>E</b>                                   |                         |           |
| (21-38) <b>F</b>                                   |                         |           |
| (1-20) <b>G</b>                                    |                         |           |
| <i>Not energy efficient - higher running costs</i> |                         |           |
| <b>England &amp; Wales</b>                         | EU Directive 2002/91/EC |           |

## London branches open six days a week Mon - Sat

Canary Wharf | City | Colindale | Dartmouth Park | Ealing | Fulham  
Hammersmith | Hampstead | Highgate | Hyde Park | Kensington | Kew  
Knightsbridge | Nine Elms | Shoreditch | Southall | Surrey Quays  
Wapping | Wembley | White City | Woolwich

## International offices

China | Hong Kong SAR | India | Indonesia | Qatar | Malaysia | Middle East |  
Singapore | South Africa | Thailand | Turkey



Benham & Reeves