



Benham & Reeves

## Tinniswood Close, Drayton Park, N5

£358 per week, £1,550 per month + fees

🛏 1 Bedroom    🚿 1 Bathroom    🛋 Part-furnished

A ground floor purpose built flat with gated off-street parking situated in Tinniswood Close N5. The property is ideally located moments from Drayton Park station (overground) and the open parkland of Highbury Fields.

Please [click here](#) for full detail

## Property features

**Double Bedroom | Bathroom | Gated Parking | Excellent Transport Links | Kitchen | EPC-C | Reception Room | Close to amenities of Holloway Road | Drayton Park Train Station (Zone 2)**

For more information about this property,  
please call our Dartmouth Park branch on

**020 7319 9660**



Redress & Client Money Protection :  
Benham and Reeves are members of The Property Ombudsman redress scheme and have Client Money protection with ARLA Propertymark.  
You can find more information on our website at <https://www.benhamandreeves.com/membership/>

**Benham & Reeves**

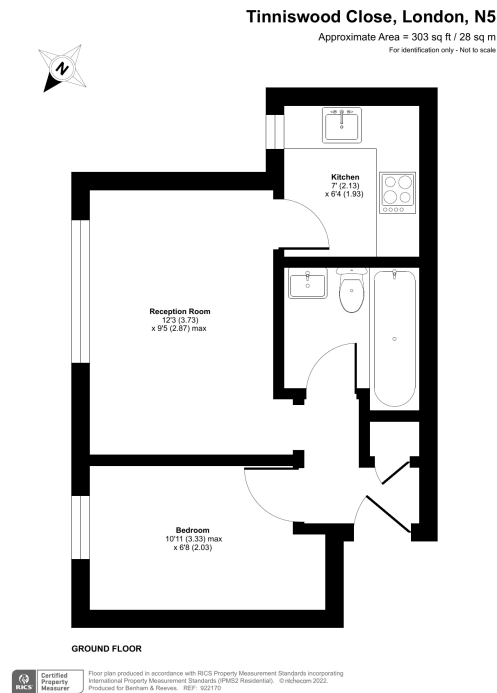




# Tinniswood Close, Drayton Park, N5

£358 per week, £1,550 per month + fees

www.benhams.com



Score	Energy rating	Current	Potential
92+	A		
81-91	B		82 B
69-80	C	70 C	
55-68	D		
39-54	E		
21-38	F		
1-20	G		

## London branches open six days a week Mon - Sat

Canary Wharf | City | Colindale | Dartmouth Park | Ealing | Fulham  
Hammersmith | Hampstead | Highgate | Hyde Park | Kensington | Kew  
Knightsbridge | Nine Elms | Shoreditch | Southall | Surrey Quays  
Wapping | Wembley | White City | Woolwich

## International offices

China | Hong Kong SAR | India | Indonesia | Qatar | Malaysia | Middle East |  
Singapore | South Africa | Thailand | Turkey

