



Benham & Reeves

Durnsford House, Durnsford Road, SW19

£623 per week, £2,700 per month + fees

 2 Bedrooms  2 Bathrooms  Furnished

***Parking Included ***

An elegant residence in Wimbledon combining modern comfort with charm. Boasting a spacious layout, sleek finishes, and a serene private garden, all just a short stroll from Wimbledon's vibrant local amenities.

Please [click here](#) for full detail

Property features

Modern 2-Bed Apartment with a Private Garden | Luxury Bathrooms Features with High Quality Designs | Sleek, fully integrated kitchen appliances | Private Parking Included | Fast and easy connections into Central London | EPC-B | Furnished with stylish, high-quality pieces | Excellent built-in storage throughout | Dedicated built-in workspace for home office needs | Close to Local Amenities

For more information about this property,
please call our Hammersmith branch on

020 8600 0960

Redress & Client Money Protection :

Benham and Reeves are members of The Property Ombudsman redress scheme and have Client Money protection with ARLA Propertymark. You can find more information on our website at <https://www.benhams.com/membership/>



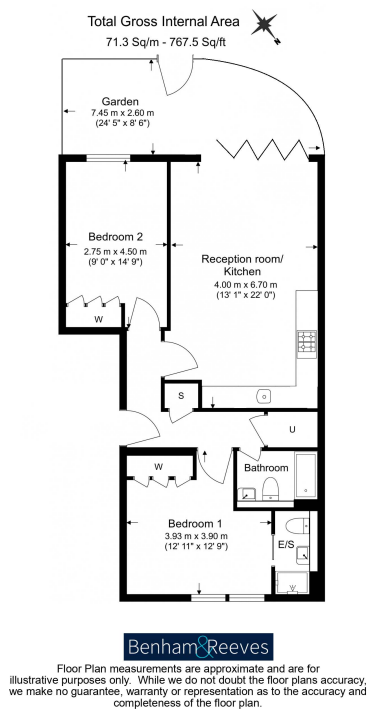
Benham & Reeves



Durnsford House, Durnsford Road, SW19

£623 per week, £2,700 per month + fees

www.benhams.com



Score	Energy rating	Current	Potential
92+	A		
81-91	B	86 B	86 B
69-80	C		
55-68	D		
39-54	E		
21-38	F		
1-20	G		

London branches open six days a week Mon - Sat

Canary Wharf | City | Colindale | Dartmouth Park | Ealing | Fulham
Hammersmith | Hampstead | Highgate | Hyde Park | Kensington | Kew
Knightsbridge | Nine Elms | Shoreditch | Southall | Surrey Quays
Wapping | Wembley | White City | Woolwich

International offices

China | Hong Kong SAR | India | Indonesia | Qatar | Malaysia | Middle East |
Singapore | South Africa | Thailand | Turkey



Benham & Reeves