



Benham & Reeves

Granville Gardens, Ealing Common, W5

£496 per week, £2,149 per month + fees

 2 Bedrooms  2 Bathrooms  Unfurnished

A spacious 4th floor property situated in a modern development in the heart of Ealing Common. Ideally located a few minutes' walk from Ealing Common Tube Station (District and Piccadilly Lines).

Please [click here](#) for full detail

Property features

Balcony | Wood floors | Modern development | 2 Bedrooms | 2 Bathrooms | EPC-C | Modern fully fitted kitchen | Close to Amenities | Ealing Common Tube station

For more information about this property,
please call our Ealing branch on

020 8280 0140

Redress & Client Money Protection :

Benham and Reeves are members of The Property Ombudsman redress scheme and have Client Money protection with ARLA Propertymark. You can find more information on our website at <https://www.benhamandreeves.com/membership/>



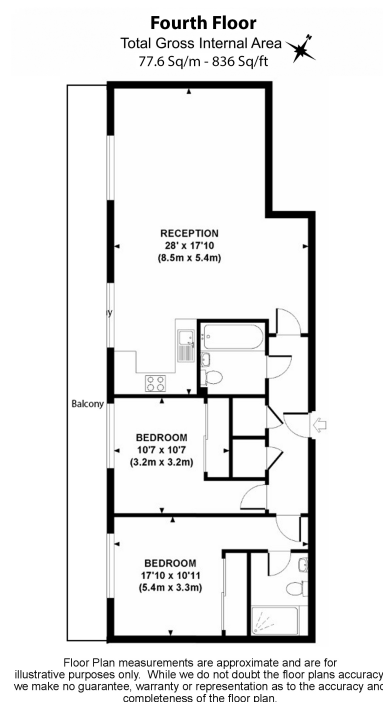
Benham & Reeves



Granville Gardens, Ealing Common, W5

£496 per week, £2,149 per month + fees

www.benhams.com



Score	Energy rating	Current	Potential
92+	A		
81-91	B		81 B
69-80	C	79 C	
55-68	D		
39-54	E		
21-38	F		
1-20	G		

London branches open six days a week Mon - Sat

Canary Wharf | City | Colindale | Dartmouth Park | Ealing | Fulham
Hammersmith | Hampstead | Highgate | Hyde Park | Kensington | Kew
Knightsbridge | Nine Elms | Shoreditch | Southall | Surrey Quays
Wapping | Wembley | White City | Woolwich

International offices

China | Hong Kong SAR | India | Indonesia | Qatar | Malaysia | Middle East | Pakistan
Singapore | South Africa | Thailand | Turkey



Benham & Reeves