



Benham & Reeves

## **Brentmead gardens, Ealing, NW10**

£808 per week, £3,501 per month + fees

🛏️ 4 Bedrooms    🚿 2 Bathrooms    🛏️  
Furnished/UnFurnished

A beautifully presented and extended semi-detached property arranged over three floors, with a lovely 70 ft private garden and off street parking. Located close to the amenities of Ealing and Hanger Lane Station.

Please [click here](#) for full detail

## Property features

**4 Bedrooms | 2 Bathrooms | Through reception room | Rear extension | Fitted kitchen | EPC - C | Wood floors | Rear garden | Off street parking | Close to Hanger Lane Station**

For more information about this property,  
please call our Ealing branch on

**020 8280 0140**

Redress & Client Money Protection :

Benham and Reeves are members of The Property Ombudsman redress scheme and have Client Money protection with ARLA Propertymark. You can find more information on our website at <https://www.benhamandreeves.com/membership/>



Benham & Reeves

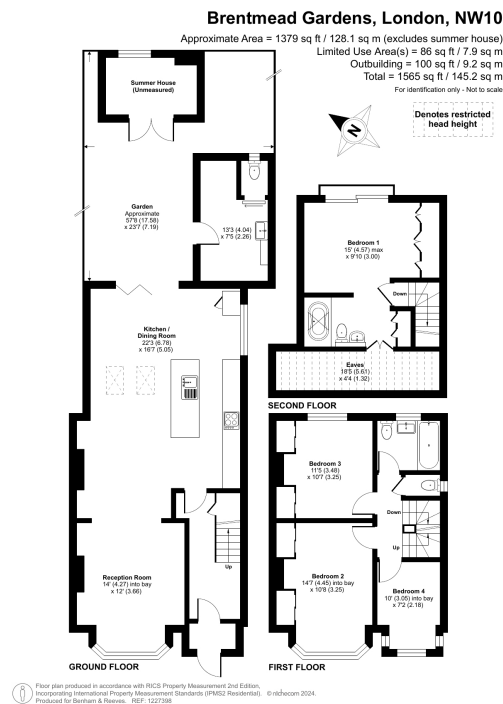




# Brentmead gardens, Ealing, NW10

£808 per week, £3,501 per month + fees

[www.benhams.com](http://www.benhams.com)



Score	Energy rating	Current	Potential
92+	A		
81-91	B		84 B
69-80	C	69 C	
55-68	D		
39-54	E		
21-38	F		
1-20	G		

## London branches open six days a week Mon - Sat

Canary Wharf | City | Colindale | Dartmouth Park | Ealing | Fulham  
Hammersmith | Hampstead | Highgate | Hyde Park | Kensington | Kew  
Knightsbridge | Nine Elms | Shoreditch | Southall | Surrey Quays  
Wapping | Wembley | White City | Woolwich



## International offices

China | Hong Kong SAR | India | Indonesia | Qatar | Malaysia | Middle East | Pakistan  
Singapore | South Africa | Thailand | Turkey

Benham & Reeves