



Benham & Reeves

Bathgate Place, Ealing, W13

£634 per week, £2,747 per month + fees

🛏️ 2 Bedrooms 🚿 2 Bathrooms 🛋️ Furnished

Spacious, modern 5th floor apartment situated within sought-after development with a concierge in Ealing. Ideally located within walking distance from West Ealing station (National Rail, Elizabeth Line) and just over half a mile from Ealing Broadway.

Please [click here](#) for full detail

Property features

2 Bedrooms | 2 Bathrooms | Reception | Concierge | Balcony | EPC-B | Wood floors | 5th floor | Close to amenities | Nearby West Ealing station

For more information about this property,
please call our Ealing branch on

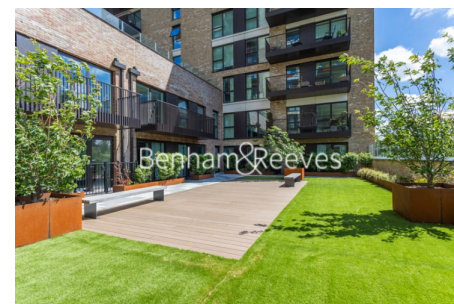
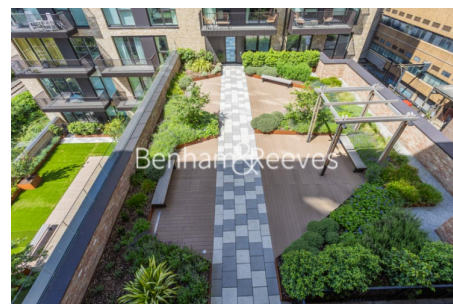
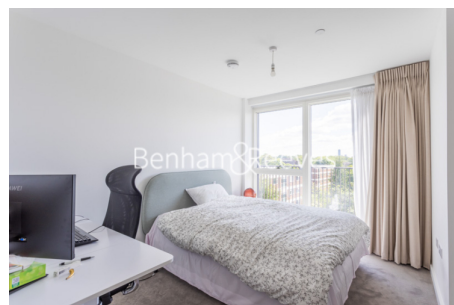
020 8280 0140

Redress & Client Money Protection :

Benham and Reeves are members of The Property Ombudsman redress scheme and have Client Money protection with ARLA Propertymark. You can find more information on our website at <https://www.benhams.com/membership/>



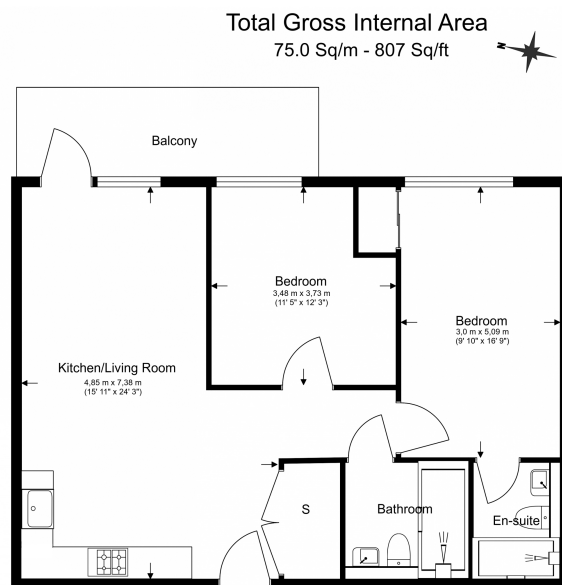
Benham & Reeves



Bathgate Place, Ealing, W13

£634 per week, £2,747 per month + fees

www.benhams.com



Floor Plan measurements are approximate and are for illustrative purposes only. While we do not doubt the floor plans accuracy, we make no guarantee, warranty or representation as to the accuracy and completeness of the floor plan.

Score	Energy rating	Current	Potential
92+	A		
81-91	B	85 B	85 B
69-80	C		
55-68	D		
39-54	E		
21-38	F		
1-20	G		

London branches open six days a week Mon - Sat

Canary Wharf | City | Colindale | Dartmouth Park | Ealing | Fulham
Hammersmith | Hampstead | Highgate | Hyde Park | Kensington | Kew
Knightsbridge | Nine Elms | Shoreditch | Southall | Surrey Quays
Wapping | Wembley | White City | Woolwich

International offices

China | Hong Kong SAR | India | Indonesia | Qatar | Malaysia | Middle East | Pakistan
Singapore | South Africa | Thailand | Turkey



Benham & Reeves