



Benham & Reeves

## **Longfield Avenue, Ealing W5**

£739 per week, £3,202 per month + fees

🛏 2 Bedrooms    🚿 2 Bathrooms    🛋 Furnished

A South facing 4th floor apartment, with underground parking, situated within a popular development in the heart of Ealing Broadway, W5. Just a few steps from Ealing Broadway underground (Elizabeth, Central and District Line) and overground stations, which offer access to the West End in under 25 minutes.

Please [click here](#) for full detail

## Property features

**Underground parking | Concierge | Gym | Swimming pool | Balcony | EPC-B | 2 Bedrooms | 2 Bathrooms | Reception | Ealing Broadway Station**

For more information about this property, please call our Ealing branch on

**020 8280 0140**

Redress & Client Money Protection :

Benham and Reeves are members of The Property Ombudsman redress scheme and have Client Money protection with ARLA Propertymark. You can find more information on our website at <https://www.benhamandreeves.com/membership/>



Benham & Reeves

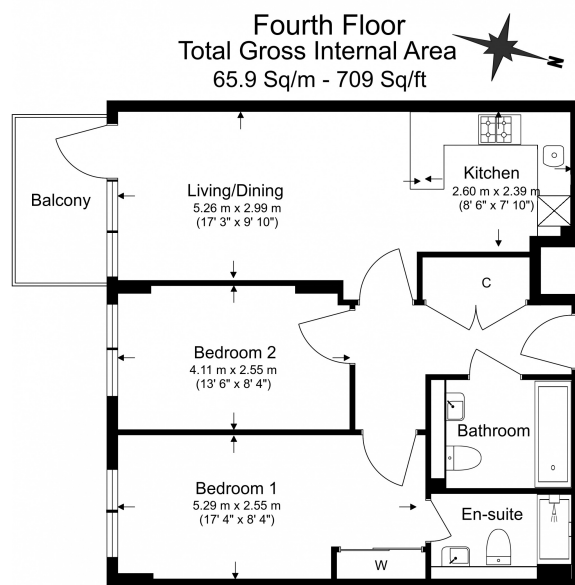




# Longfield Avenue, Ealing W5

£739 per week, £3,202 per month + fees

www.benhams.com



Benham & Reeves

Floor Plan measurements are approximate and are for illustrative purposes only. While we do not doubt the floor plans accuracy, we make no guarantee, warranty or representation as to the accuracy and completeness of the floor plan.

Score	Energy rating	Current	Potential
92+	A		
81-91	B	82 B	82 B
69-80	C		
55-68	D		
39-54	E		
21-38	F		
1-20	G		

## London branches open six days a week Mon - Sat

Canary Wharf | City | Colindale | Dartmouth Park | Ealing | Fulham  
Hammersmith | Hampstead | Highgate | Hyde Park | Kensington | Kew  
Knightsbridge | Nine Elms | Shoreditch | Southall | Surrey Quays  
Wapping | Wembley | White City | Woolwich

## International offices

China | Hong Kong SAR | India | Indonesia | Qatar | Malaysia | Middle East | Pakistan  
Singapore | South Africa | Thailand | Turkey



Benham & Reeves