



Benham & Reeves

Longfield Avenue, Ealing W5

£785 per week, £3,400 per month + fees

 2 Bedrooms  2 Bathrooms  Furnished

A stunning spacious 7th floor apartment, with residents' spa and gym, situated in a popular development in the heart of Ealing Broadway, W5. Just a few steps from Ealing Broadway underground (Central Line) and overground stations, which offer access to the West End in just 30 minutes.

Please [click here](#) for full detail

Property features

2 Bedrooms | 2 Bathrooms | Reception | Furnished | Fitted Kitchen | EPC-B | Swimming pool & gym | 24hr concierge | Nearby Ealing Broadway

For more information about this property,
please call our Ealing branch on

020 8280 0140

Redress & Client Money Protection :

Benham and Reeves are members of The Property Ombudsman redress scheme and have Client Money protection with ARLA Propertymark. You can find more information on our website at <https://www.benhamandreeves.com/membership/>



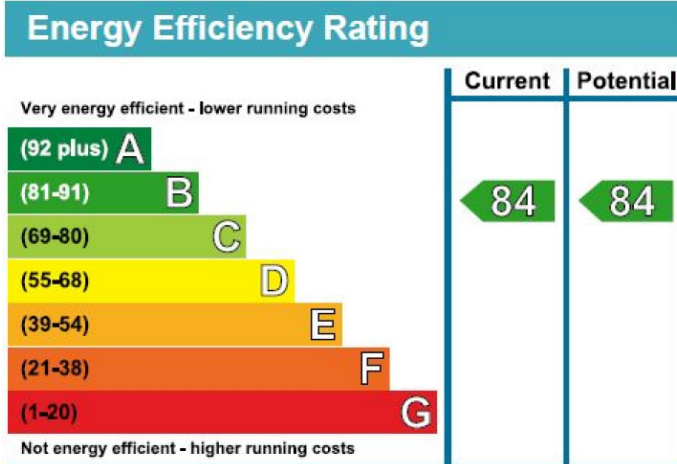
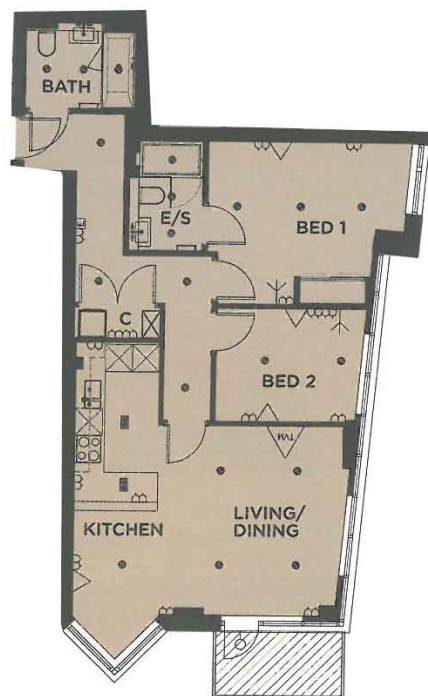
Benham & Reeves



Longfield Avenue, Ealing W5

£785 per week, £3,400 per month + fees

www.benhams.com



London branches open six days a week Mon - Sat

Canary Wharf | City | Colindale | Dartmouth Park | Ealing | Fulham
Hammersmith | Hampstead | Highgate | Hyde Park | Kensington | Kew
Knightsbridge | Nine Elms | Shoreditch | Southall | Surrey Quays
Wapping | Wembley | White City | Woolwich

International offices

China | Hong Kong SAR | India | Indonesia | Qatar | Malaysia | Middle East | Pakistan
Singapore | South Africa | Thailand | Turkey



Benham & Reeves