



Benham & Reeves

Heathcroft, Ealing, W5

£693 per week, £3,003 per month + fees

 3 Bedrooms  2 Bathrooms  Furnished

A spacious three double bedroom apartment in this modern purpose built development offering ALLOCATED SECURE PARKING, a resident's GYMNASIUM, communal gardens and a fantastic CONCIERGE service.

Please [click here](#) for full detail

Property features

Three Double Bedrooms | Fully Fitted Kitchen | Furnished | Wood floors | Lift | EPC-C | Parking | Gym | Concierge | Park Royal and Hanger Lane Tube Station

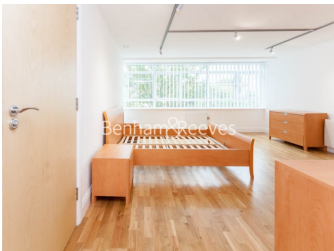
For more information about this property,
please call our Ealing branch on

020 8280 0140



Redress & Client Money Protection :
Benham and Reeves are members of The Property Ombudsman redress scheme and have Client Money protection with ARLA Propertymark.
You can find more information on our website at <https://www.benhamandreeves.com/membership/>

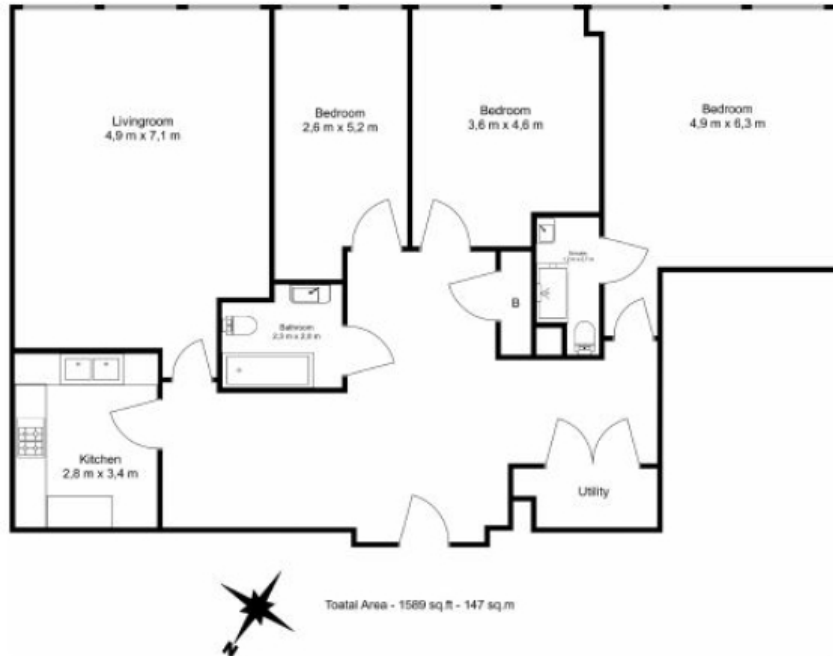
Benham & Reeves



Heathcroft, Ealing, W5

£693 per week, £3,003 per month + fees

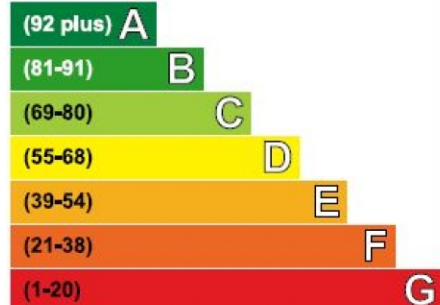
www.benhams.com



Floor Plan measurements are approximate and are for illustrative purposes only. While we do not doubt the floor plans accuracy, we make no guarantee, warranty or representation as to the accuracy and completeness of the floor plan.

Energy Efficiency Rating

Very energy efficient - lower running costs



Not energy efficient - higher running costs

Current	Potential
74	82

London branches open six days a week Mon - Sat

Canary Wharf | City | Colindale | Dartmouth Park | Ealing | Fulham
Hammersmith | Hampstead | Highgate | Hyde Park | Kensington | Kew
Knightsbridge | Nine Elms | Shoreditch | Southall | Surrey Quays
Wapping | Wembley | White City | Woolwich

International offices

China | Hong Kong SAR | India | Indonesia | Qatar | Malaysia | Middle East | Pakistan
Singapore | South Africa | Thailand | Turkey



Benham&Reeves