



Benham&Reeves

Uxbridge Road, Ealing, W5

£416 per week, £1,803 per month + fees

 1 Bedroom  1 Bathroom  Furnished

A bright apartment situated within a sought-after development located on Uxbridge Road, within walking distance to Ealing Broadway (Central and District lines) underground and National Rail stations.

Please [click here](#) for full detail

Property features

1 Bedroom | 1 Bathroom | Reception | Furnished | Fitted Kitchen | EPC-B | Concierge | Private Balcony | Nearby Ealing Broadway Station

For more information about this property,
please call our Property Management branch on

020 7319 9740

Redress & Client Money Protection :

Benham and Reeves are members of The Property Ombudsman redress scheme and have Client Money protection with ARLA Propertymark. You can find more information on our website at <https://www.benhams.com/membership/>



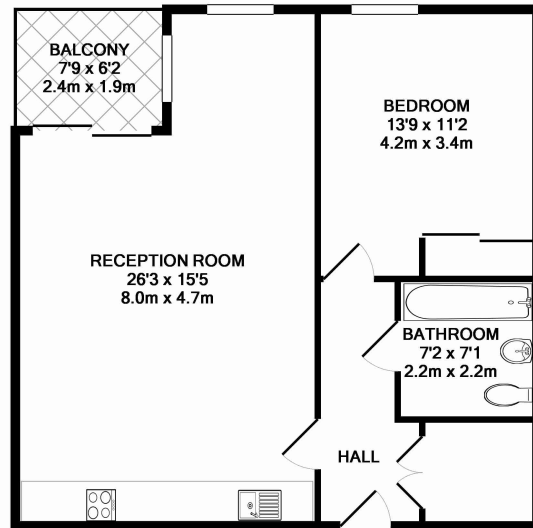
Benham&Reeves



Uxbridge Road, Ealing, W5

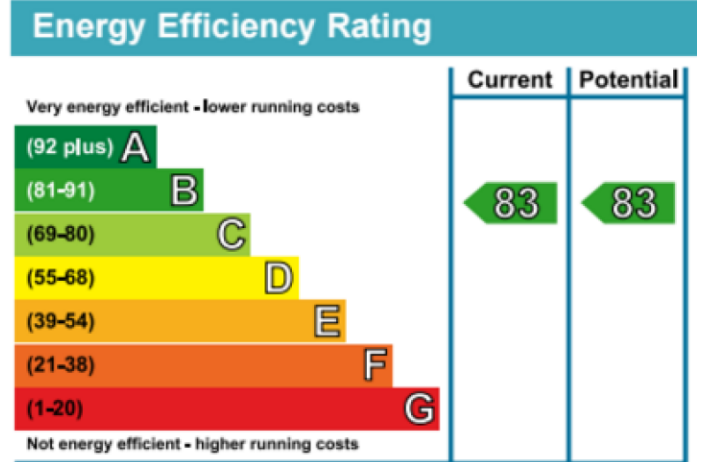
£416 per week, £1,803 per month + fees

www.benhams.com



84AT.E.W5 8TH FLOOR
TOTAL APPROX. FLOOR AREA 650 SQ.FT. (60.4 SQ.M.)

Whilst every attempt has been made to ensure the accuracy of the floor plan contained here, measurements of doors, windows, rooms and any other items are approximate and no responsibility is taken for any error, omission, or mis-statement. This plan is for illustrative purposes only and should be used as such by any prospective purchaser. The services, systems and appliances shown have not been tested and no guarantee as to their operability or efficiency can be given.
Made with Metropix ©2015



London branches open six days a week Mon - Sat

Canary Wharf | City | Colindale | Dartmouth Park | Ealing | Fulham
Hammersmith | Hampstead | Highgate | Hyde Park | Kensington | Kew
Knightsbridge | Nine Elms | Shoreditch | Southall | Surrey Quays
Wapping | Wembley | White City | Woolwich

International offices

China | Hong Kong SAR | India | Indonesia | Qatar | Malaysia | Middle East |
Singapore | South Africa | Thailand | Turkey



Benham & Reeves