



Benham & Reeves

**Longfield Avenue, Ealing, W5**

£693 per week, £3,003 per month + fees

 2 Bedrooms    2 Bathrooms    Furnished

A well presented 3rd apartment situated in a popular development in Ealing Broadway. The property is located just a few minutes from Ealing Broadway (Central, Elizabeth and District lines) underground and National Rail Stations EPC-C

Please [click here](#) for full detail

## Property features

**Balcony | Swimming pool | Wood floors | Furnished | Fully Fitted Kitchen | EPC-C | South facing | 24 Hour Concierge | Gym | Nearby Ealing Broadway Station**

For more information about this property, please call our Ealing branch on

**020 8280 0140**

Redress & Client Money Protection :

Benham and Reeves are members of The Property Ombudsman redress scheme and have Client Money protection with ARLA Propertymark. You can find more information on our website at <https://www.benhams.com/membership/>



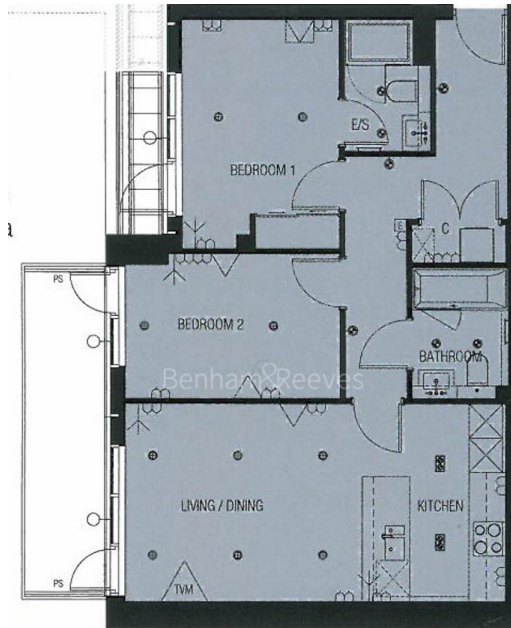
Benham & Reeves



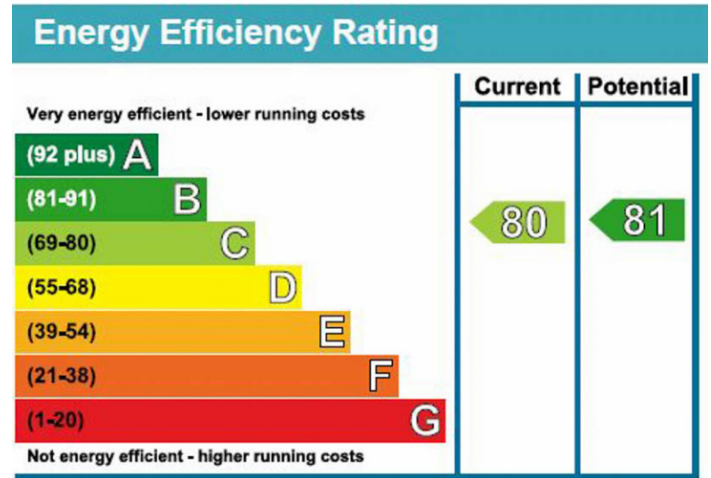
# Longfield Avenue, Ealing, W5

£693 per week, £3,003 per month + fees

www.benhams.com



Living / Dining	4.42m x 3.46m	14'6" x 11'4"
Kitchen	3.46m x 2.35m	11'4" x 7'8"
Bedroom 1	4.02m* x 2.80m	13'2"* x 9'2"
Bedroom 2	3.83m x 2.55m	12'6" x 8'4"



## London branches open six days a week Mon - Sat

Canary Wharf | City | Colindale | Dartmouth Park | Ealing | Fulham  
 Hammersmith | Hampstead | Highgate | Hyde Park | Kensington | Kew  
 Knightsbridge | Nine Elms | Shoreditch | Southall | Surrey Quays  
 Wapping | Wembley | White City | Woolwich

## International offices

China | Hong Kong SAR | India | Indonesia | Qatar | Malaysia | Middle East |  
 Singapore | South Africa | Thailand | Turkey

