



Benham & Reeves

Greenleaf Walk, Southall, UB1

£393 per week, £1,703 per month + fees

 1 Bedroom  1 Bathroom  Furnished

Stunning 5th floor apartment, with parking, situated in an outstanding development on the in Western fringe of London featuring great views of the surrounding landscaped gardens. Southall Station (Elizabeth line) is within a short walk from the property.

Please [click here](#) for full detail

Property features

Underground parking | Gym | Concierge | Balcony | Cinema room | EPC-B | Residents lounge | Full Height Windows | Nearby Southall Station

For more information about this property,
please call our Southall branch on

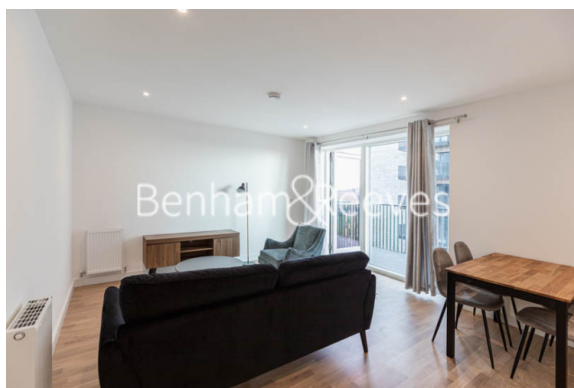
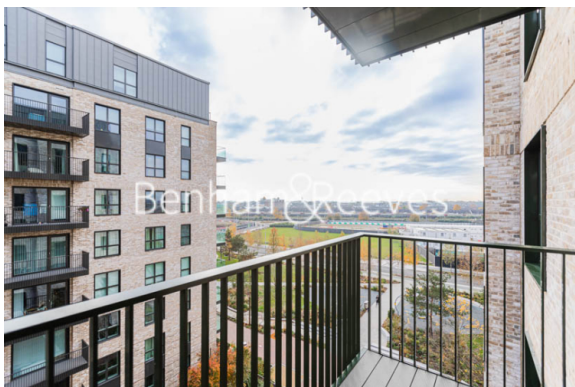
020 8051 0800

Redress & Client Money Protection :

Benham and Reeves are members of The Property Ombudsman redress scheme and have Client Money protection with ARLA Propertymark. You can find more information on our website at <https://www.benhams.com/membership/>



Benham & Reeves



Greenleaf Walk, Southall, UB1

£393 per week, £1,703 per month + fees

www.benhams.com

Score	Energy rating	Current	Potential
92+	A		
81-91	B	84 B	84 B
69-80	C		
55-68	D		
39-54	E		
21-38	F		
1-20	G		

London branches open six days a week Mon - Sat

Canary Wharf | City | Colindale | Dartmouth Park | Ealing | Fulham
Hammersmith | Hampstead | Highgate | Hyde Park | Kensington | Kew
Knightsbridge | Nine Elms | Shoreditch | Southall | Surrey Quays
Wapping | Wembley | White City | Woolwich

International offices

China | Hong Kong SAR | India | Israel | Malaysia | Middle East | Pakistan
Qatar | Singapore | South Africa | Thailand | Turkey

