



Benham & Reeves

## **Longfield Avenue, Ealing, W5**

£1,154 per week, £5,001 per month + fees

 3 Bedrooms    2 Bathrooms    Furnished

A stunning, spacious elite apartment set in a popular development, with underground parking and residents spa, right in the heart of Ealing. Ideally positioned a short walk from Ealing Broadway (Central and District lines) Underground

Please [click here](#) for full detail

## Property features

**Underground parking | 24hr concierge | Swimming pool | Gym | Terrace | EPC-B | Air conditioning | Wooden floors | Nearby Ealing Broadway Underground and National Rail Station**

For more information about this property,  
please call our Ealing branch on

**020 8280 0140**

Redress & Client Money Protection :

Benham and Reeves are members of The Property Ombudsman redress scheme and have Client Money protection with ARLA Propertymark. You can find more information on our website at <https://www.benhamandreeves.com/membership/>



**Benham & Reeves**

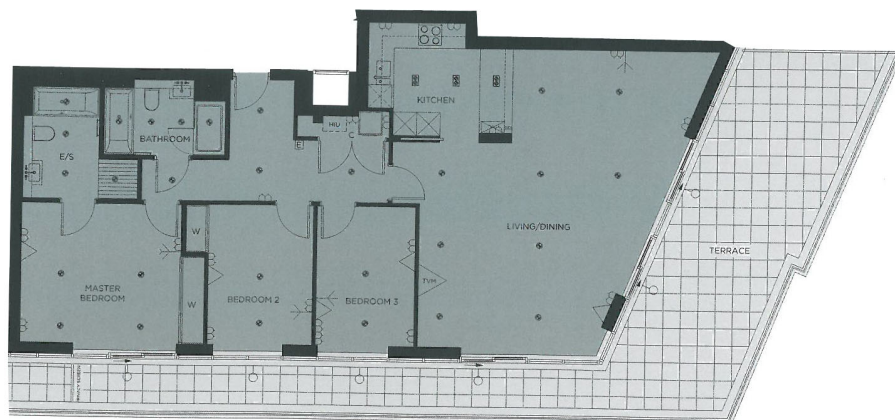




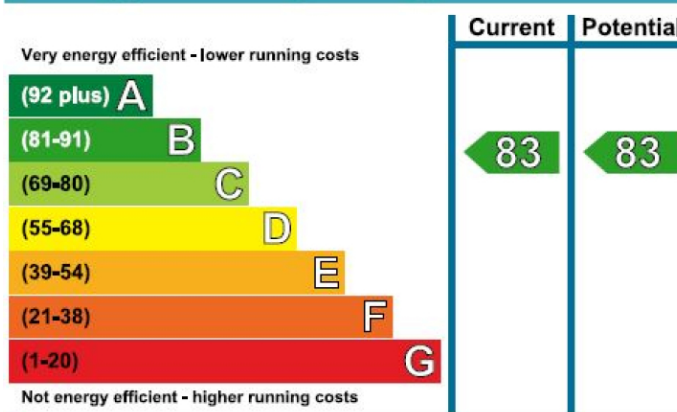
# Longfield Avenue, Ealing, W5

£1,154 per week, £5,001 per month + fees

[www.benhams.com](http://www.benhams.com)



## Energy Efficiency Rating



## London branches open six days a week Mon - Sat

Canary Wharf | City | Colindale | Dartmouth Park | Ealing | Fulham  
Hammersmith | Hampstead | Highgate | Hyde Park | Kensington | Kew  
Knightsbridge | Nine Elms | Shoreditch | Southall | Surrey Quays  
Wapping | Wembley | White City | Woolwich

## International offices

China | Hong Kong SAR | India | Israel | Malaysia | Middle East | Pakistan  
Qatar | Singapore | South Africa | Thailand | Turkey



Benham & Reeves