



Benham & Reeves

Longfield Avenue, Ealing, W5

£785 per week, £3,402 per month + fees

 2 Bedrooms  2 Bathrooms 
Furnished/UnFurnished

A spacious 7th floor apartment, with underground parking, situated within a popular development in the heart of Ealing Broadway, W5, located a brief walk from Ealing Broadway Underground (Elizabeth, Central and District lines).

Please [click here](#) for full detail

Property features

2 Bedrooms | 2 Bathrooms | Reception | Furnished | Fitted Kitchen | EPC-B | 775 Sq Ft | Underground Parking | Swimming Pool and Gym | Nearby Ealing Broadway Station

For more information about this property,
please call our Property Management branch on

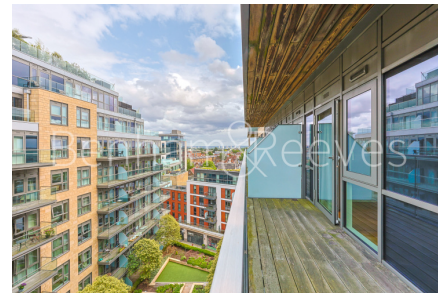
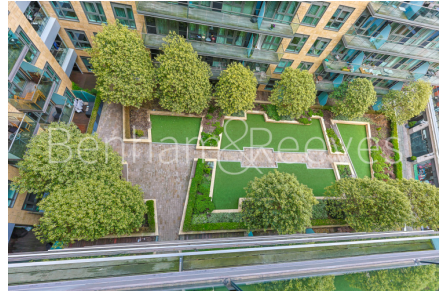
020 7319 9740

Redress & Client Money Protection :

Benham and Reeves are members of The Property Ombudsman redress scheme and have Client Money protection with ARLA Propertymark. You can find more information on our website at <https://www.benhamandreeves.com/membership/>



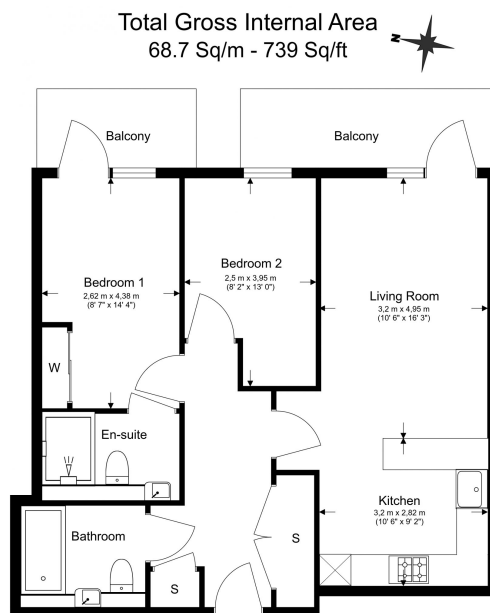
Benham&Reeves



Longfield Avenue, Ealing, W5

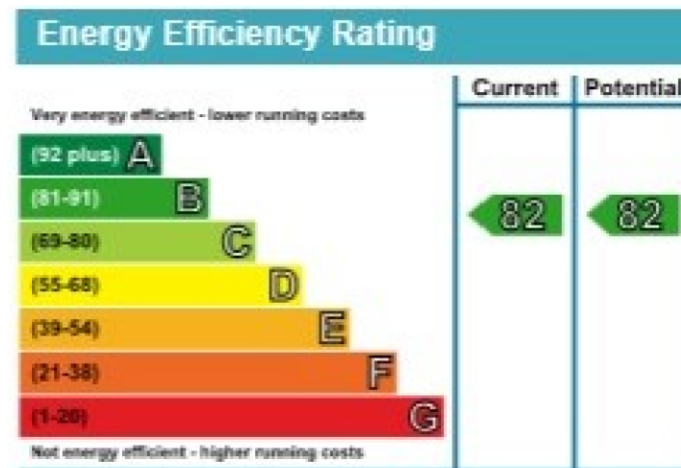
£785 per week, £3,402 per month + fees

www.benhams.com



Benham & Reeves

Floor Plan measurements are approximate and are for illustrative purposes only. While we do not doubt the floor plans accuracy, we make no guarantee, warranty or representation as to the accuracy and completeness of the floor plan.



London branches open six days a week Mon - Sat

Canary Wharf | City | Colindale | Dartmouth Park | Ealing | Fulham
Hammersmith | Hampstead | Highgate | Hyde Park | Kensington | Kew
Knightsbridge | Nine Elms | Shoreditch | Southall | Surrey Quays
Wapping | Wembley | White City | Woolwich

International offices

China | Hong Kong SAR | India | Indonesia | Qatar | Malaysia | Middle East |
Singapore | South Africa | Thailand | Turkey



Benham & Reeves