



Benham & Reeves

**Longfield Avenue, Ealing, W5**

£762 per week, £3,302 per month + fees

 2 Bedrooms    2 Bathrooms    Furnished

A modern light 7th floor apartment, with underground parking, set in a highly popular development in the heart of Ealing. Ideally located a short walk from Ealing Broadway Station (Elizabeth, Central and District Lines).

Please [click here](#) for full detail

## Property features

**2 Bedrooms | 2 Bathrooms | 24hr concierge | Swimming pool | Spa | EPC-B | Underground parking | Balcony | Gym | Nearby Ealing Broadway Station**

For more information about this property,  
please call our Ealing branch on

**020 8280 0140**

Redress & Client Money Protection :

Benham and Reeves are members of The Property Ombudsman redress scheme and have Client Money protection with ARLA Propertymark. You can find more information on our website at <https://www.benhamandreeves.com/membership/>



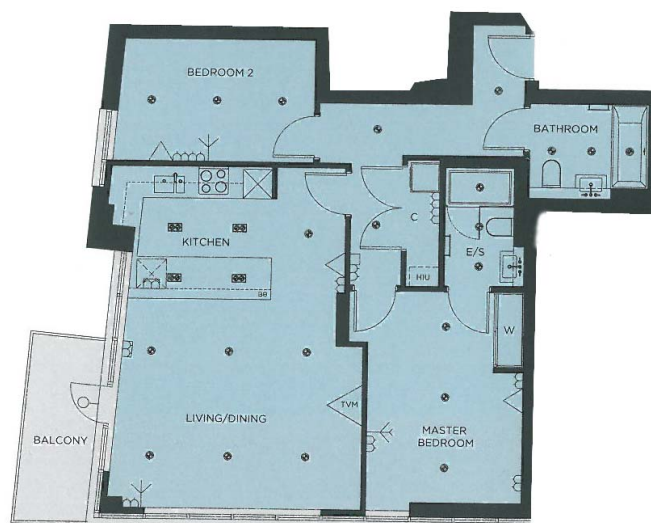
Benham&Reeves



# Longfield Avenue, Ealing, W5

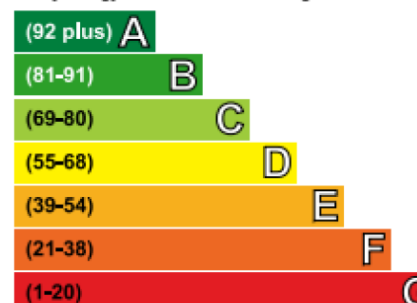
£762 per week, £3,302 per month + fees

[www.benhams.com](http://www.benhams.com)



## Energy Efficiency Rating

Very energy efficient • lower running costs



Current	Potential
82	82

Not energy efficient • higher running costs

## London branches open six days a week Mon - Sat

Canary Wharf | City | Colindale | Dartmouth Park | Ealing | Fulham  
Hammersmith | Hampstead | Highgate | Hyde Park | Kensington | Kew  
Knightsbridge | Nine Elms | Shoreditch | Southall | Surrey Quays  
Wapping | Wembley | White City | Woolwich

## International offices

China | Hong Kong SAR | India | Indonesia | Qatar | Malaysia | Middle East | Pakistan  
Singapore | South Africa | Thailand | Turkey



Benham & Reeves