



Benham & Reeves

## **Longfield Avenue, Ealing, W5**

£543 per week, £2,353 per month + fees

 1 Bedroom    1 Bathroom    Furnished

A superb 5th floor apartment situated within a highly popular development in Ealing, close to Ealing Broadway (Elizabeth, District and Central lines) Station.

Please [click here](#) for full detail

## Property features

**One bedroom | 24hr Concierge | Swimming pool | Gym | Balcony | EPC- B | Furnished | Fully fitted kitchen | Nearby (Elizabeth, District and Central lines) Station**

For more information about this property,  
please call our Ealing branch on

**020 8280 0140**

Redress & Client Money Protection :

Benham and Reeves are members of The Property Ombudsman redress scheme and have Client Money protection with ARLA Propertymark. You can find more information on our website at <https://www.benhamandreeves.com/membership/>



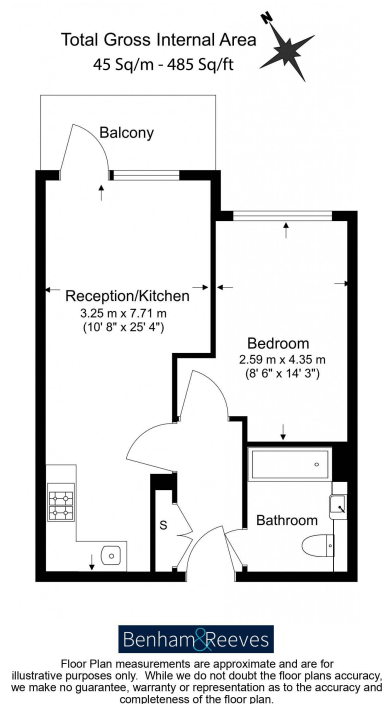
Benham & Reeves



# Longfield Avenue, Ealing, W5

£543 per week, £2,353 per month + fees

[www.benhams.com](http://www.benhams.com)



Score	Energy rating	Current	Potential
92+	A		
81-91	B	81 B	81 B
69-80	C		
55-68	D		
39-54	E		
21-38	F		
1-20	G		

## London branches open six days a week Mon - Sat

Canary Wharf | City | Colindale | Dartmouth Park | Ealing | Fulham  
Hammersmith | Hampstead | Highgate | Hyde Park | Kensington | Kew  
Knightsbridge | Nine Elms | Shoreditch | Southall | Surrey Quays  
Wapping | Wembley | White City | Woolwich

## International offices

China | Hong Kong SAR | India | Indonesia | Qatar | Malaysia | Middle East |  
Singapore | South Africa | Thailand | Turkey



Benham & Reeves