



Benham & Reeves

Dickens Yard, Ealing, W5

£565 per week, £2,448 per month + fees

🛏 1 Bedroom 🚿 1 Bathroom 🛋 Furnished

A modern 4th floor apartment with secure underground parking situated within a popular development a short walk from Ealing #b#roadway (Elizabeth, Central and District lines) underground station.

Please [click here](#) for full detail

Property features

Underground parking | 24hr concierge | Swimming pool | Gym | Balcony | EPC-C | Wood floors | 24 Hour Porter | Nearby Ealing Broadway Station

For more information about this property, please call our Ealing branch on

020 8280 0140

Redress & Client Money Protection :

Benham and Reeves are members of The Property Ombudsman redress scheme and have Client Money protection with ARLA Propertymark. You can find more information on our website at <https://www.benhams.com/membership/>



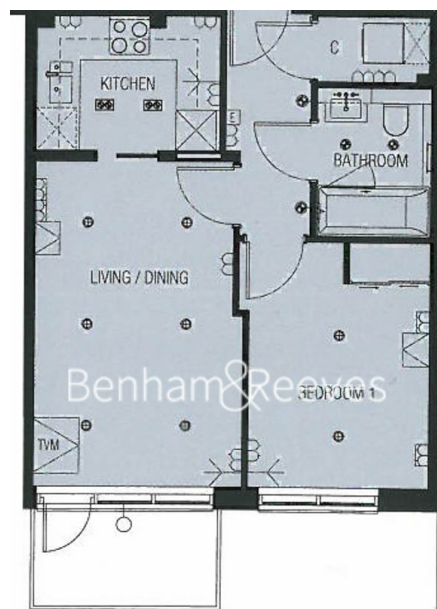
Benham & Reeves



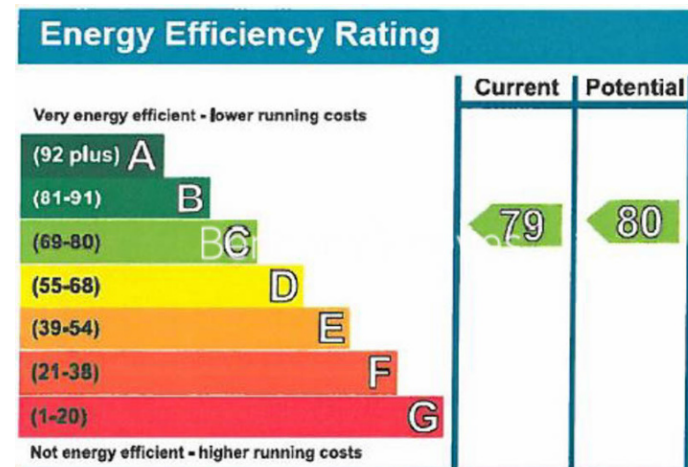
Dickens Yard, Ealing, W5

£565 per week, £2,448 per month + fees

www.benhams.com



Living / Dining	4.83m x 3.16m	15'10" x 10'
Kitchen	2.75m x 1.99m	9'0" x 6'6"
Bedroom 1	3.65m x 2.70m	11'10" x 8'1"



London branches open six days a week Mon - Sat

Canary Wharf | City | Colindale | Dartmouth Park | Ealing | Fulham
Hammersmith | Hampstead | Highgate | Hyde Park | Kensington | Kew
Knightsbridge | Nine Elms | Shoreditch | Southall | Surrey Quays
Wapping | Wembley | White City | Woolwich

International offices

China | Hong Kong SAR | India | Indonesia | Qatar | Malaysia | Middle East | Pakistan
Singapore | South Africa | Thailand | Turkey



Benham & Reeves