



Benham & Reeves

Benham & Reeves

**Philbeach Gardens, Earl's Court, SW5**

£875 per week, £3,792 per month + fees

 2 Bedrooms    2 Bathrooms    Furnished

A modern raised ground floor apartment, with private garden, set in a white stucco period conversion with original period features. Transport links include Earl's Court Tube station (Piccadilly and District lines) and there is convenient access to the A4 for motorists.

Please [click here](#) for full detail

## Property features

**2 Bedrooms | 2 Bathrooms | 838 sq ft | Reception | Private Garden | EPC-B | Furnished | Close to Earls Court shopping and restaurants | Quiet Leafy Street | Nearby Earl's Court Tube Station**

For more information about this property,  
please call our Kensington branch on

**020 7938 3522**

Redress & Client Money Protection :

Benham and Reeves are members of The Property Ombudsman redress scheme and have Client Money protection with ARLA Propertymark. You can find more information on our website at <https://www.benhamandreeves.com/membership/>



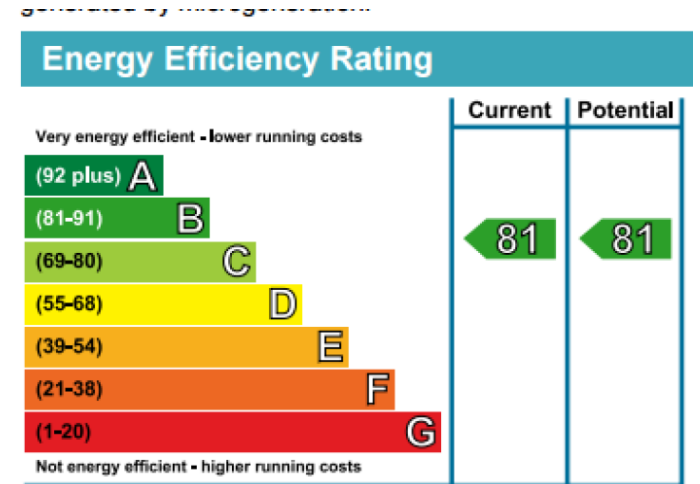
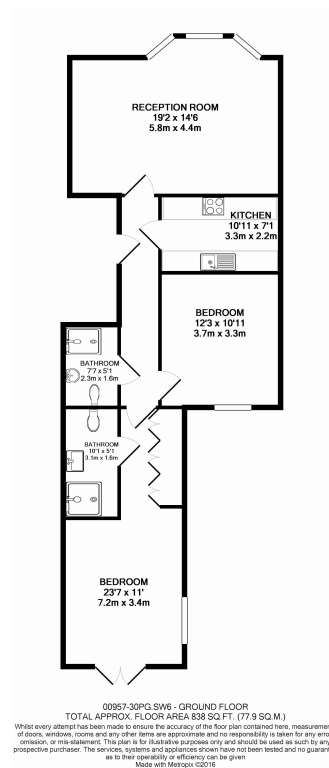
**Benham & Reeves**



# Philbeach Gardens, Earl's Court, SW5

£875 per week, £3,792 per month + fees

[www.benhams.com](http://www.benhams.com)



## London branches open six days a week Mon - Sat

Canary Wharf | City | Colindale | Dartmouth Park | Ealing | Fulham  
Hammersmith | Hampstead | Highgate | Hyde Park | Kensington | Kew  
Knightsbridge | Nine Elms | Shoreditch | Southall | Surrey Quays  
Wapping | Wembley | White City | Woolwich

## International offices

China | Hong Kong SAR | India | Indonesia | Qatar | Malaysia | Middle East | Pakistan  
Singapore | South Africa | Thailand | Turkey



Benham & Reeves