



Benham & Reeves

**Philbeach Gardens, Earl's Court, SW5**

£395 per week, £1,712 per month + fees

 1 Bedroom  1 Bathroom  Furnished

A well-appointed garden level apartment, with outside terrace, situated in a refurbished Victorian period building on a quiet, leafy street. Ideal situated for Earl's Court Station.

Please [click here](#) for full detail

### Property features

**1 Bedroom | 1 Bathroom | Reception | Furnished | Fitted Kitchen | EPC-C | 557 Sq Ft | Victorian Mansion Block | Lower Ground Floor | Nearby Earl's Court Tube Station**

For more information about this property, please call our Kensington branch on

**020 7938 3522**



Redress & Client Money Protection :

Benham and Reeves are members of The Property Ombudsman redress scheme and have Client Money protection with ARLA Propertymark.

You can find more information on our website at <https://www.benham.com/membership/>

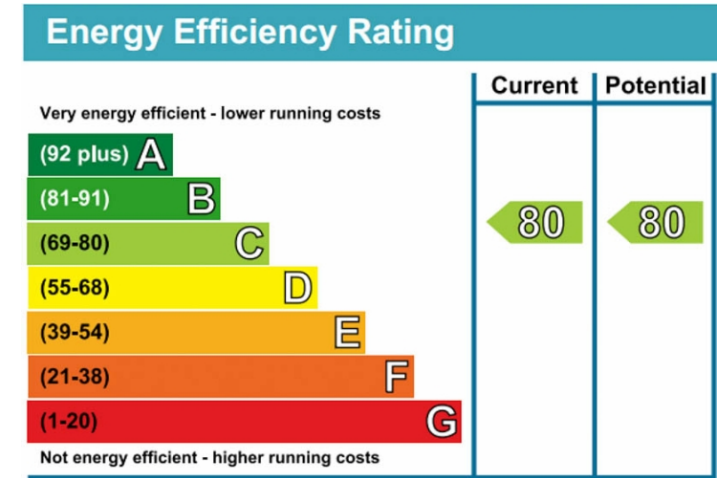
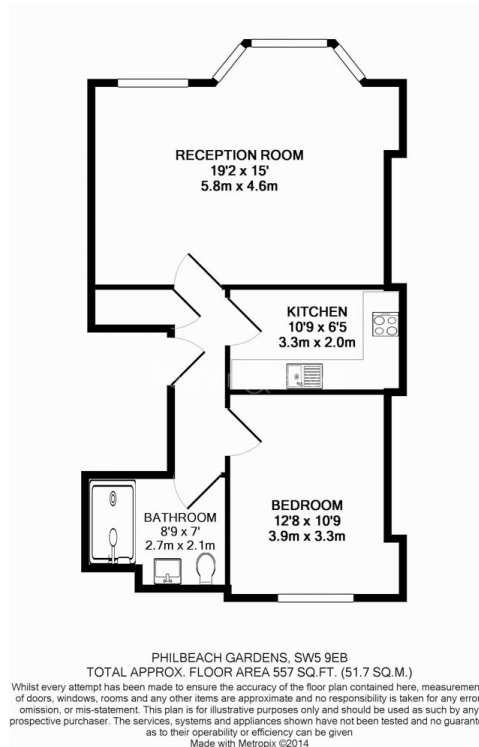
Benham & Reeves



# Philbeach Gardens, Earl's Court, SW5

£395 per week, £1,712 per month + fees

www.benhams.com



## London branches open six days a week Mon - Sat

Canary Wharf | City | Colindale | Dartmouth Park | Ealing | Fulham  
Hammersmith | Hampstead | Highgate | Hyde Park | Kensington | Kew  
Knightsbridge | Nine Elms | Shoreditch | Southall | Surrey Quays  
Wapping | Wembley | White City | Woolwich

## International offices

China | Hong Kong SAR | India | Indonesia | Qatar | Malaysia | Middle East |  
Singapore | South Africa | Thailand | Turkey

