



Benham & Reeves

Lillie Square, Earls Court, SW6

£750 per week, £3,250 per month + fees

 1 Bedroom  1 Bathroom  Furnished

Stunning apartment with amazing amenities situated in the most desirable development in West London. Conveniently located moments from Earls Court and West Kensington Underground stations.

Please [click here](#) for full detail

Property features

Concierge | Residents Gym and Swimming Pool | Wooden Flooring in Reception Areas | Comfort Cooling | Fitted Wardrobes | EPC-B | Fully Tiled Bathroom | Second Floor with Lift Access | Juliet Balcony | Earls Court & West Kensington Underground

For more information about this property,
please call our Kensington branch on

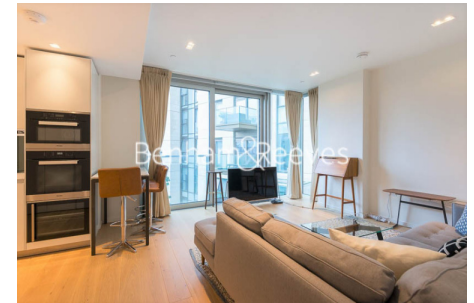
020 7938 3522

Redress & Client Money Protection :

Benham and Reeves are members of The Property Ombudsman redress scheme and have Client Money protection with ARLA Propertymark. You can find more information on our website at <https://www.benhamandreeves.com/membership/>



Benham & Reeves

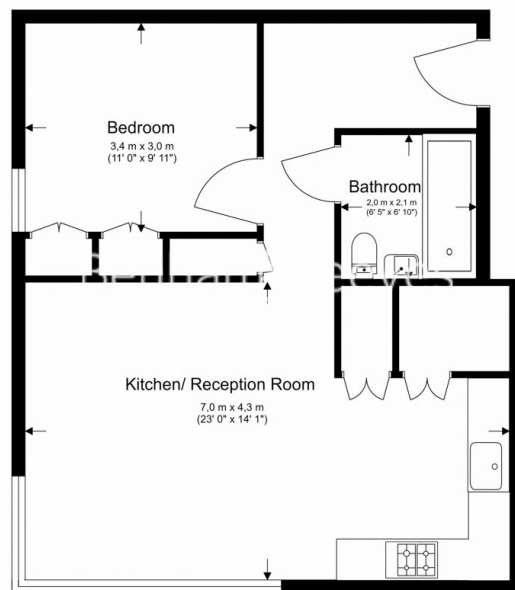


Lillie Square, Earls Court, SW6

£750 per week, £3,250 per month + fees

www.benhams.com

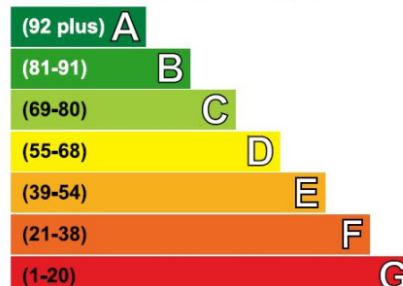
2nd Floor
Total Gross Internal Area
54.3 Sq/m - 584 Sq/ft



Floor Plan measurements are approximate and are for illustrative purposes only. While we do not doubt the floor plans accuracy, we make no guarantee, warranty or representation as to the accuracy and completeness of the floor plan.

Energy Efficiency Rating

Very energy efficient - lower running costs



Not energy efficient - higher running costs

Current	Potential
84	84

London branches open six days a week Mon - Sat

Canary Wharf | City | Colindale | Dartmouth Park | Ealing | Fulham
Hammersmith | Hampstead | Highgate | Hyde Park | Kensington | Kew
Knightsbridge | Nine Elms | Shoreditch | Southall | Surrey Quays
Wapping | Wembley | White City | Woolwich

International offices

China | Hong Kong SAR | India | Indonesia | Qatar | Malaysia | Middle East | Pakistan
Singapore | South Africa | Thailand | Turkey



Benham & Reeves