



Benham & Reeves

## Casson Square, Southbank Place, SE1

£1,200 per week, £5,200 per month + fees

 2 Bedrooms    2 Bathrooms    Furnished

Large and bright apartment set in Southbank Place in 30 Casson Square with good security.

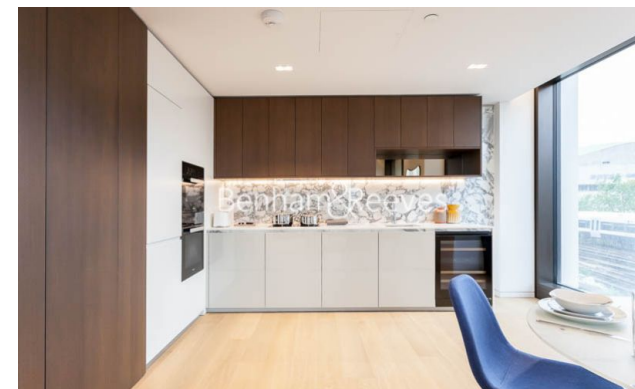
Please [click here](#) for full detail

## Property features

**Luxury 2 Bedroom Apartment | Bespoke Bathroom & En-Suite | Open Plan Living Space | Fitted Kitchen | Furnished | EPC-B | Wooden Flooring Throughout | 24-Hour Concierge & Residents & Lounge | Waterloo Station Nearby**

For more information about this property,  
please call our City branch on

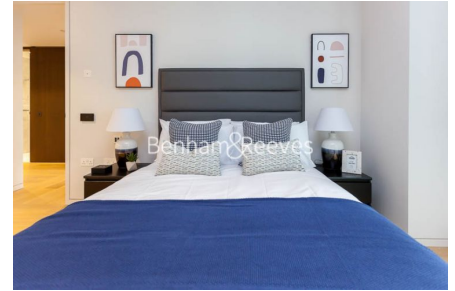
**020 7213 9700**



Redress & Client Money Protection :  
Benham and Reeves are members of The Property Ombudsman redress scheme and have Client Money protection with ARLA Propertymark.  
You can find more information on our website at <https://www.benhams.com/membership/>

Benham & Reeves

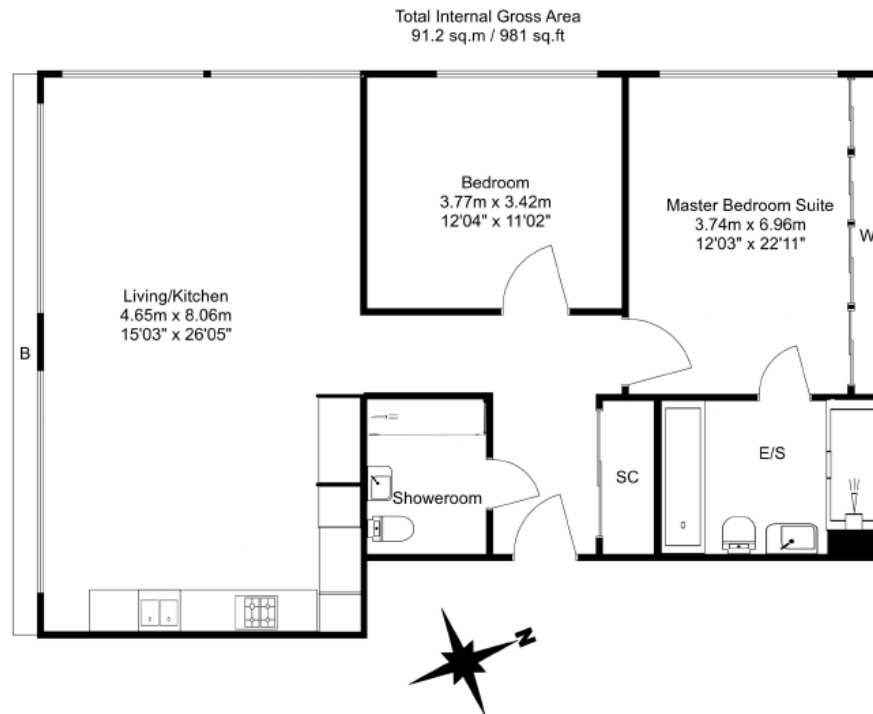




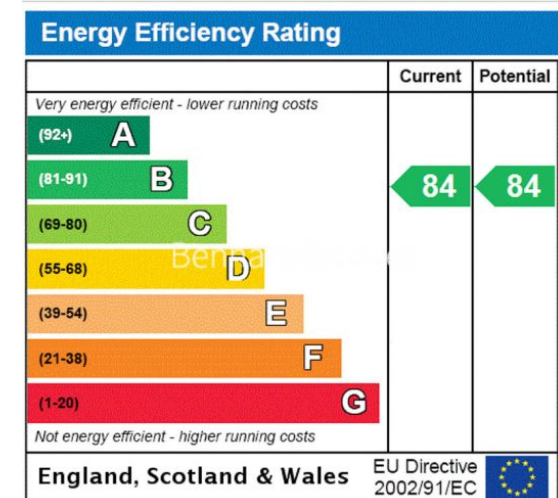
# Casson Square, Southbank Place, SE1

£1,200 per week, £5,200 per month + fees

[www.benhams.com](http://www.benhams.com)



Floor Plan measurements are approximate and are for illustrative purposes only. While we do not doubt the floor plans accuracy, we make no guarantee, warranty or representation as to the accuracy and completeness of the floor plan.



## London branches open six days a week Mon - Sat

Canary Wharf | City | Colindale | Dartmouth Park | Ealing | Fulham  
Hammersmith | Hampstead | Highgate | Hyde Park | Kensington | Kew  
Knightsbridge | Nine Elms | Shoreditch | Southall | Surrey Quays  
Wapping | Wembley | White City | Woolwich

## International offices

China | Hong Kong SAR | India | Israel | Malaysia | Middle East | Pakistan  
Qatar | Singapore | South Africa | Thailand | Turkey



Benham & Reeves