



Benham & Reeves

Deacon Street, Elephant and Castle, SE17

£808 per week, £3,501 per month + fees

 2 Bedrooms  2 Bathrooms  Furnished

Beautifully presented apartment situated within a naturally bright dual aspect apartment situated within a sought after development with excellent facilities and close to Elephant and Castle National Rail and Underground stations.

Please [click here](#) for full detail

Property features

Two Bedrooms | Two Bathrooms | Resident's garden | Furnished. Fitted Kitchen | Bright and Spacious | EPC-B | Private Gym | 24hr Concierge | Lift Access | Close to elephant and castle underground and rail station

For more information about this property,
please call our Surrey Quays branch on

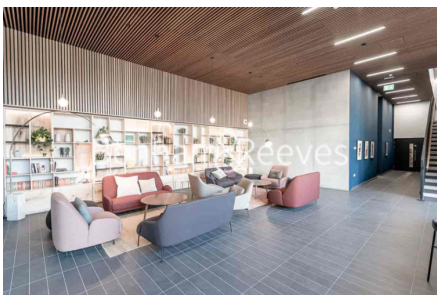
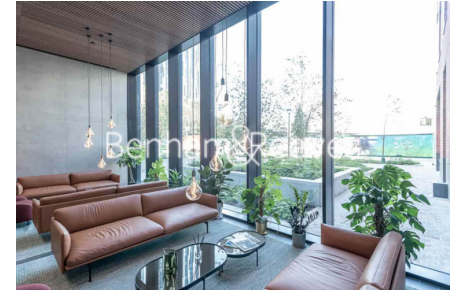
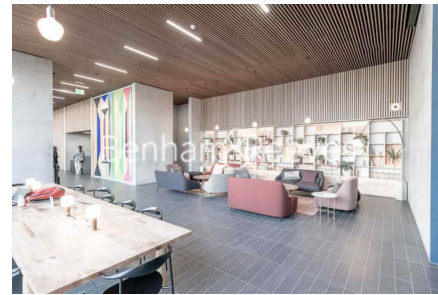
020 7740 3050

Redress & Client Money Protection :

Benham and Reeves are members of The Property Ombudsman redress scheme and have Client Money protection with ARLA Propertymark. You can find more information on our website at <https://www.benhamandreeves.com/membership/>



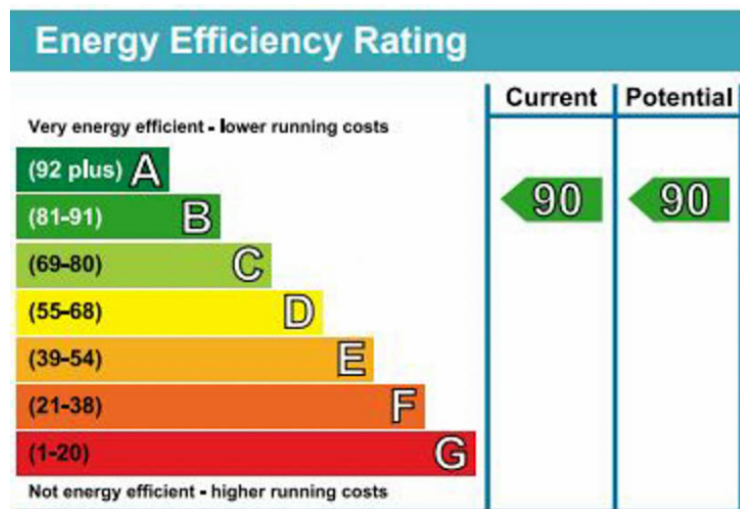
Benham & Reeves



Deacon Street, Elephant and Castle, SE17

£808 per week, £3,501 per month + fees

www.benhams.com



London branches open six days a week Mon - Sat

Canary Wharf | City | Colindale | Dartmouth Park | Ealing | Fulham
Hammersmith | Hampstead | Highgate | Hyde Park | Kensington | Kew
Knightsbridge | Nine Elms | Shoreditch | Southall | Surrey Quays
Wapping | Wembley | White City | Woolwich

International offices

China | Hong Kong SAR | India | Indonesia | Qatar | Malaysia | Middle East | Pakistan
Singapore | South Africa | Thailand | Turkey

