



Benham & Reeves

**Gasholder Place, Nine Elms, SE11**

£577 per week, £2,500 per month + fees

 Studio    1 Bathroom    Furnished

A stylish 5th floor Manhattan Studio Apartment situated within a desirable development with several roof terraces perfectly positioned a seven-minute walk from Vauxhall and Oval Stations.

Please [click here](#) for full detail

## Property features

**Brand new | Manhattan Studio | Air cooling | Balcony | Separate sleeping area | EPC-B | 24 hour concierge | Residence Gym opening in November | Tesco located on site | Vauxhall Station**

For more information about this property,  
please call our Nine Elms branch on

**020 3282 3700**

Redress & Client Money Protection :

Benham and Reeves are members of The Property Ombudsman redress scheme and have Client Money protection with ARLA Propertymark.

You can find more information on our website at <https://www.benhams.com/membership/>



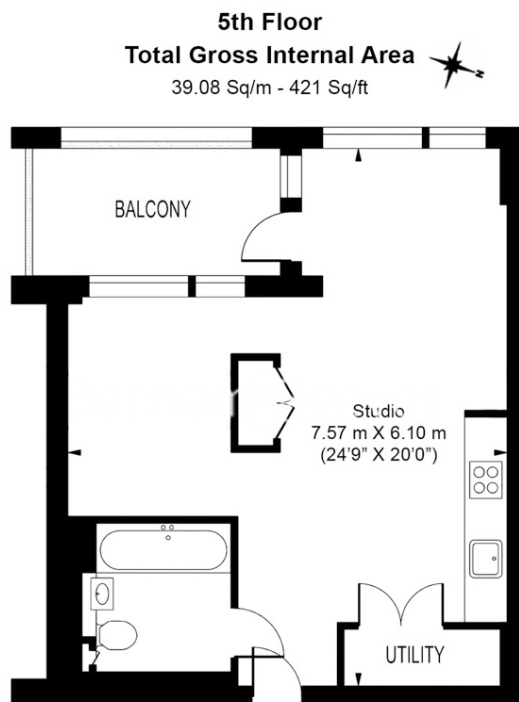
**Benham & Reeves**



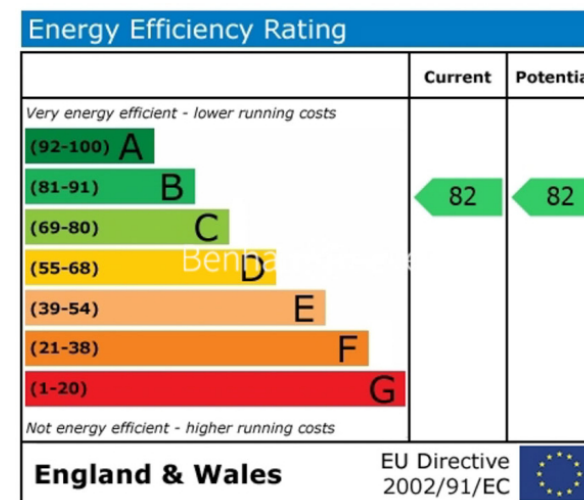
# Gasholder Place, Nine Elms, SE11

£577 per week, £2,500 per month + fees

www.benhams.com



Floor Plan measurements are approximate and are for illustrative purposes only. While we do not doubt the floor plans accuracy, we make no guarantee, warranty or representation as to the accuracy and completeness of the floor plan.



## London branches open six days a week Mon - Sat

Canary Wharf | City | Colindale | Dartmouth Park | Ealing | Fulham  
 Hammersmith | Hampstead | Highgate | Hyde Park | Kensington | Kew  
 Knightsbridge | Nine Elms | Shoreditch | Southall | Surrey Quays  
 Wapping | Wembley | White City | Woolwich

## International offices

China | Hong Kong SAR | India | Israel | Malaysia | Middle East | Pakistan  
 Qatar | Singapore | South Africa | Thailand | Turkey



Benham & Reeves