



Benham&Reeves

Ravenscroft Court, Essian Sreet, E1

£416 per week, £1,803 per month + fees

 1 Bedroom  1 Bathroom  Furnished

Well located, modern upper floor apartment situated in a canal side residential development, within easy reach of The City, Canary Wharf & Stratford Westfield. Within walking distance of Mile End Underground Station (District and Central Lines).

Please [click here](#) for full detail

Property features

Modern One Bedroom Apartment | Open Plan Reception With Balcony | Fitted Kitchen With Integrated Appliances | Bedroom Equipped With Large Fitted Wardrobe | Family Size Bathroom | EPC-C | Wood Floors To Living Areas | Floor To Ceiling Windows With Canalside Aspects | Easy Reach Of The City, Canary Wharf & Stratford Westfield | Short Walk To Mile End & Stepney Green Stations

For more information about this property,
please call our Wapping branch on

020 7680 8900

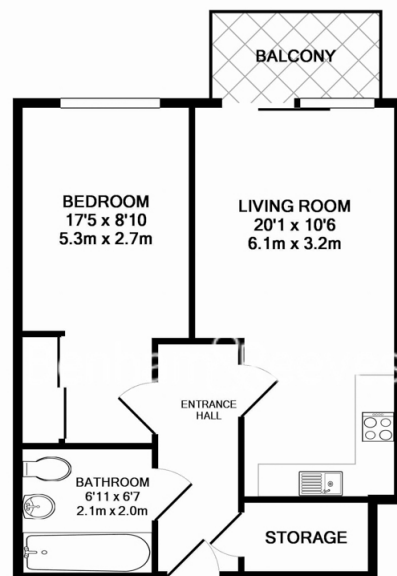




Ravenscroft Court, Essian Sreet, E1

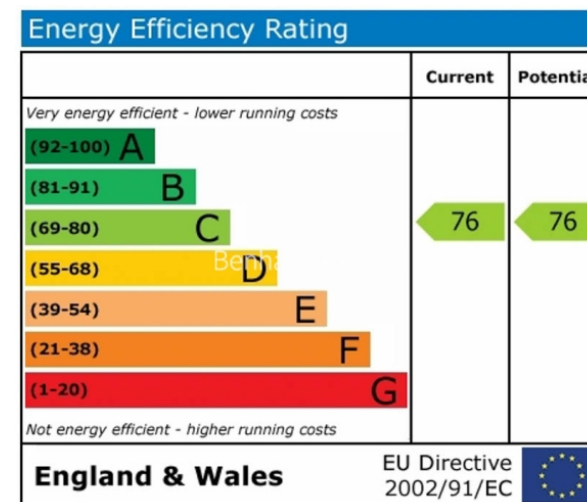
£416 per week, £1,803 per month + fees

www.benhams.com



RAVENS CROFT, E1 4QE
TOTAL APPROX. FLOOR AREA 457 SQ.FT. (42.4 SQ.M.)

Whilst every attempt has been made to ensure the accuracy of the floor plan contained here, measurements of doors, windows, rooms and any other items are approximate and no responsibility is taken for any error, omission, or mis-statement. This plan is for illustrative purposes only and should be used as such by any prospective purchaser. The services, systems and appliances shown have not been tested and no guarantee as to their operability or efficiency can be given
Made with Metropix ©2013



London branches open six days a week Mon - Sat

Canary Wharf | City | Colindale | Dartmouth Park | Ealing | Fulham
Hammersmith | Hampstead | Highgate | Hyde Park | Kensington | Kew
Knightsbridge | Nine Elms | Shoreditch | Southall | Surrey Quays
Wapping | Wembley | White City | Woolwich

International offices

China | Hong Kong SAR | India | Indonesia | Qatar | Malaysia | Middle East |
Singapore | South Africa | Thailand | Turkey



Benham & Reeves