



Benham & Reeves

Bloomsbury, Euston NW1

£693 per week, £3,003 per month + fees

🛏 1 Bedroom 🚿 1 Bathroom 🛋 Furnished

A luxury 1 double bedroom apartment situated within a modern residential building minutes from Warren Street and Euston Square stations. This contemporary apartment boasts a full furnishing package, fully integrated kitchen and very large terrace. EPC-C

Please [click here](#) for full detail

Property features

Contemporary 1 Double Bedroom Apartment | Luxury Double Shower Room | Very Good Size Double Aspect Reception Room | Bespoke Furnishing | Fully Fitted Separate Kitchen with Well-Known Appliances | EPC- C | Internal Area: 624 Sq Ft / EPC-C / Air Conditioning | Very Large Private Terrace Accessible from All Principle Roo | Moment from Warren Street (Picadilly Line) | Nearby Euston Square stations

For more information about this property,
please call our Hyde Park branch on

020 7402 9866

Redress & Client Money Protection :

Benham and Reeves are members of The Property Ombudsman redress scheme and have Client Money protection with ARLA Propertymark. You can find more information on our website at <https://www.benhamandreeves.com/membership/>



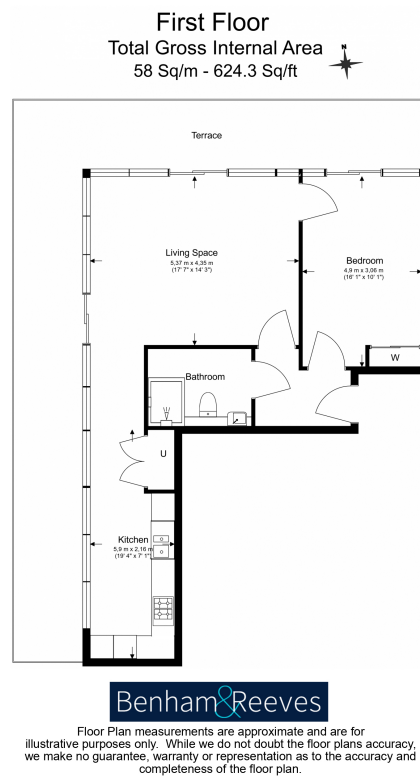
Benham&Reeves



Bloomsbury, Euston NW1

£693 per week, £3,003 per month + fees

www.benhams.com



London branches open six days a week Mon - Sat

Canary Wharf | City | Colindale | Dartmouth Park | Ealing | Fulham
Hammersmith | Hampstead | Highgate | Hyde Park | Kensington | Kew
Knightsbridge | Nine Elms | Shoreditch | Southall | Surrey Quays
Wapping | Wembley | White City | Woolwich

International offices

China | Hong Kong SAR | India | Indonesia | Qatar | Malaysia | Middle East | Pakistan
Singapore | South Africa | Thailand | Turkey



Benham & Reeves