



Benham & Reeves

Ontario Tower, Fairmont Avenue, E14

£404 per week, £1,751 per month + fees

 Studio  1 Bathroom  Furnished/UnFurnished

Spacious Studio apartment situated in a sought-after development, with swimming pool and gym within walking distance from Blackwall DLR station and Canary Wharf.

Please [click here](#) for full detail

Property features

Studio Apartment | One Shower Room | Fitted Kitchen with Integrated Appliances | Floor to ceiling windows | Water Bill Included | EPC-C | Wood flooring | Residents Gym, Swimming Pool | Close to Blackwall DLR

For more information about this property, please call our Canary Wharf branch on

020 8036 3200

Redress & Client Money Protection :

Benham and Reeves are members of The Property Ombudsman redress scheme and have Client Money protection with ARLA Propertymark. You can find more information on our website at <https://www.benhams.com/membership/>



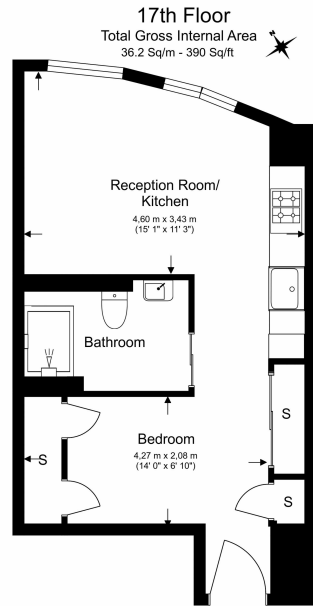
Benham & Reeves



Ontario Tower, Fairmont Avenue, E14

£404 per week, £1,751 per month + fees

www.benhams.com



Floor Plan measurements are approximate and are for illustrative purposes only. While we do not doubt the floor plans accuracy, we make no guarantee, warranty or representation as to the accuracy and completeness of the floor plan.

Score	Energy rating	Current	Potential
92+	A		
81-91	B		
69-80	C	71 c	75 c
55-68	D		
39-54	E		
21-38	F		
1-20	G		

London branches open six days a week Mon - Sat

Canary Wharf | City | Colindale | Dartmouth Park | Ealing | Fulham
Hammersmith | Hampstead | Highgate | Hyde Park | Kensington | Kew
Knightsbridge | Nine Elms | Shoreditch | Southall | Surrey Quays
Wapping | Wembley | White City | Woolwich

International offices

China | Hong Kong SAR | India | Indonesia | Qatar | Malaysia | Middle East |
Singapore | South Africa | Thailand | Turkey



Benham & Reeves