



Benham & Reeves

Pearson Square, Fitzrovia, Oxford Circus, W1T

£1,615 per week, £7,000 per month + fees

 2 Bedrooms  2 Bathrooms  Furnished

A contemporary 2-bedroom duplex apartment set in Fitzrovia; central location moments from Oxford Street and Tottenham Court Road. The property's sought-after location in the heart of central London means there are an abundance of nearby travel stations. EPC-B

Please [click here](#) for full detail

Property features

Duplex 2 Double Bedroom with Built-in Wardrobes (Lower & Gro | 2 Luxury En-Suite Bathrooms (1 Double Walk-in Shower) / Addi | Large Reception Room with Dinning Area and Floor to Ceiling | Contemporary Open-Plan Fitted Kitchen with Well-Known Applia | Furnished / Ceiling Speaker & iDevice Home Automatio | EPC-B | 1169 Sq Ft / Air Conditioning & Under Floor Heating / Separa | Residents' Gym, Pool Table room, Meeting Lounge & Cineplex | 24 Hour Concierge & Security / Large Private Terrace (245 Sq | Large Hallway / Utility Room / Storage Room

For more information about this property,
please call our Hyde Park branch on

020 7402 9866

Redress & Client Money Protection :

Benham and Reeves are members of The Property Ombudsman redress scheme and have Client Money protection with ARLA Propertymark.

You can find more information on our website at <https://www.benhamandreeves.com/membership/>



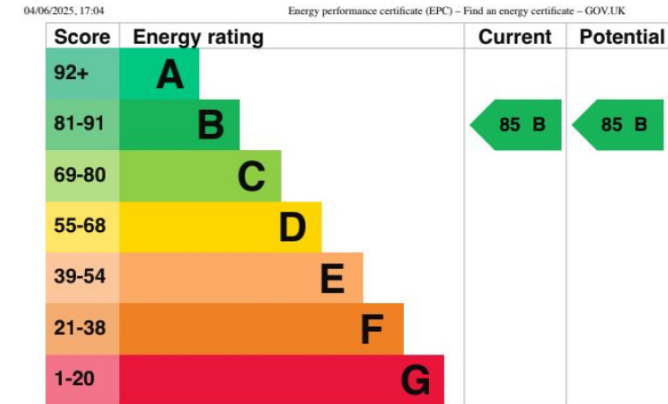
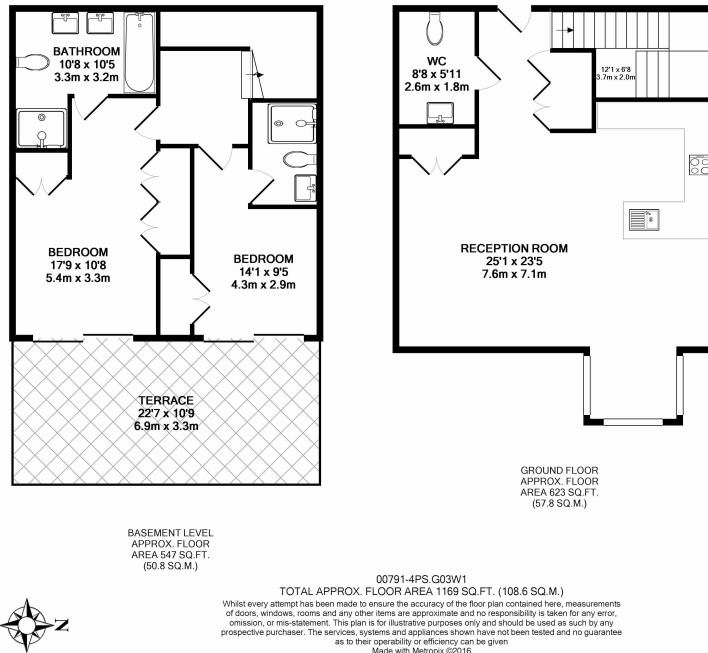
Benham&Reeves



Pearson Square, Fitzrovia, Oxford Circus, W1T

£1,615 per week, £7,000 per month + fees

www.benhams.com



London branches open six days a week Mon - Sat

Canary Wharf | City | Colindale | Dartmouth Park | Ealing | Fulham
Hammersmith | Hampstead | Highgate | Hyde Park | Kensington | Kew
Knightsbridge | Nine Elms | Shoreditch | Southall | Surrey Quays
Wapping | Wembley | White City | Woolwich

International offices

China | Hong Kong SAR | India | Indonesia | Qatar | Malaysia | Middle East | Pakistan
Singapore | South Africa | Thailand | Turkey



Benham & Reeves