



Benham & Reeves

Brunswick House, Fulham Reach, W6

£900 per week, £3,900 per month + fees

 2 Bedrooms  2 Bathrooms  Part-furnished

A stylish 6th floor apartment situated in a popular riverside development, with a host of onsite amenities, in Fulham, close to the amenities of Hammersmith. The property benefits from being located close to excellent transport facilities, with Hammersmith (Zone 2) underground station within walking distance.

Please [click here](#) for full detail

Property features

2 Bedrooms | 2 Bathrooms | Reception | Furn/Unfurn | Fitted Kitchen | EPC-B | Dish Washer, Fridge and Wine Cooler | 24 Hour Security and Concierge Services | Nearby Hammersmith Station (0.5miles)

For more information about this property,
please call our Hammersmith branch on

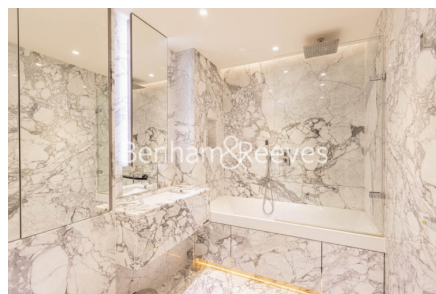
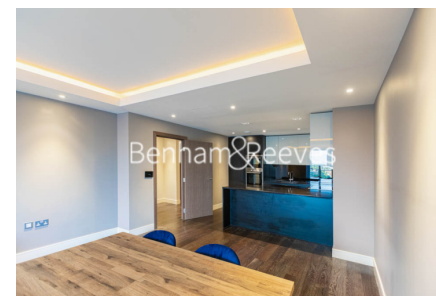
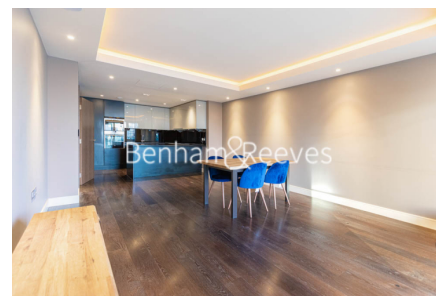
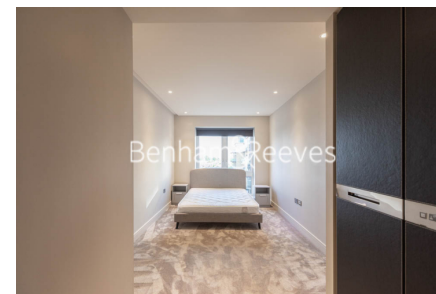
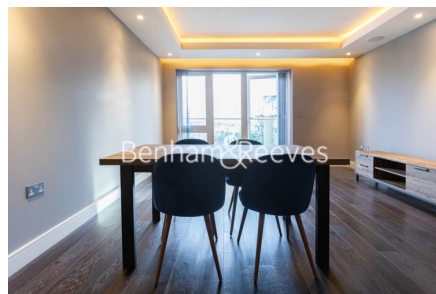
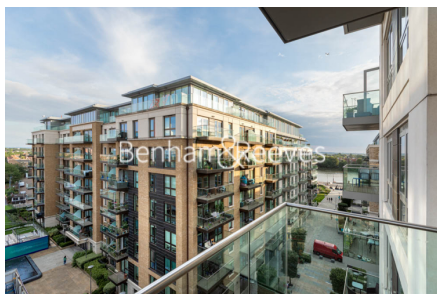
020 8600 0960

Redress & Client Money Protection :

Benham and Reeves are members of The Property Ombudsman redress scheme and have Client Money protection with ARLA Propertymark. You can find more information on our website at <https://www.benhams.com/membership/>



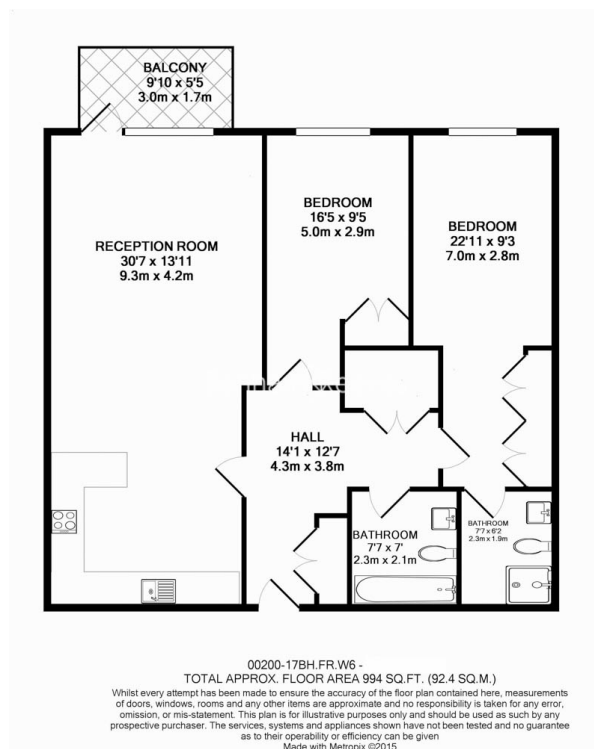
Benham & Reeves



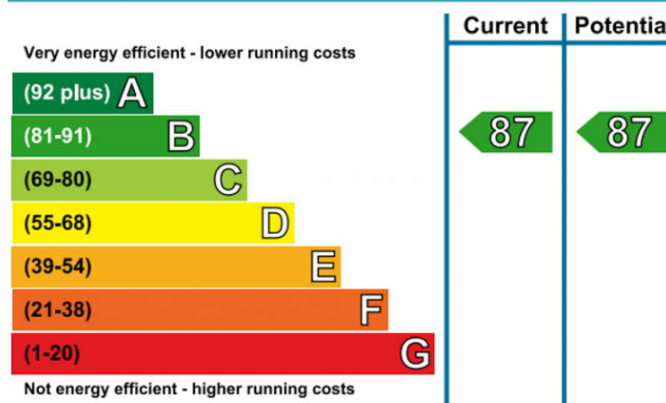
Brunswick House, Fulham Reach, W6

£900 per week, £3,900 per month + fees

www.benhams.com



Energy Efficiency Rating



London branches open six days a week Mon - Sat

Canary Wharf | City | Colindale | Dartmouth Park | Ealing | Fulham
Hammersmith | Hampstead | Highgate | Hyde Park | Kensington | Kew
Knightsbridge | Nine Elms | Shoreditch | Southall | Surrey Quays
Wapping | Wembley | White City | Woolwich

International offices

China | Hong Kong SAR | India | Indonesia | Qatar | Malaysia | Middle East |
Singapore | South Africa | Thailand | Turkey



Benham & Reeves