



Benham & Reeves

## **Brunswick House, Fulham Reach, W6**

£600 per week, £2,600 per month + fees

🛏 1 Bedroom    🚿 1 Bathroom    🛋 Furnished

A modern 4th floor apartment, with excellent onsite resident facilities, situated in a riverside development close to the amenities of Hammersmith. Located within walking distance from Hammersmith underground station, (Piccadilly, Circle, District and Hammersmith and City line).

Please [click here](#) for full detail

## Property features

**Gym, Swimming pool, Cinema | Large one bedroom | Modern New Build | 24 Hour Concierge | Furnished | EPC-B | Close to Amenities | Private Balcony | Nearby Hammersmith Station**

For more information about this property,  
please call our Hammersmith branch on

**020 8600 0960**

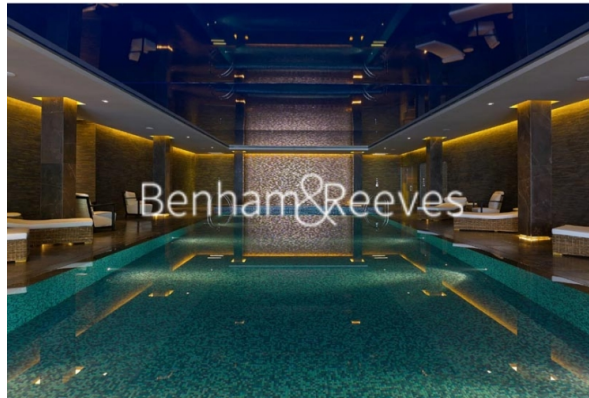
Redress & Client Money Protection :

Benham and Reeves are members of The Property Ombudsman redress scheme and have Client Money protection with ARLA Propertymark. You can find more information on our website at <https://www.benhamandreeves.com/membership/>



Benham & Reeves

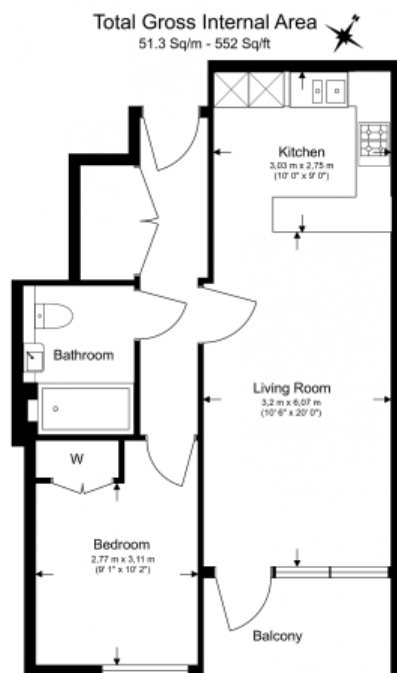




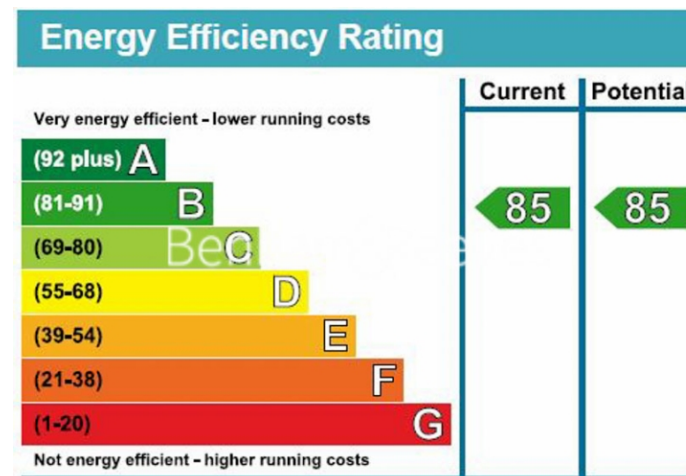
# Brunswick House, Fulham Reach, W6

£600 per week, £2,600 per month + fees

[www.benhams.com](http://www.benhams.com)



Floor Plan measurements are approximate and are for illustrative purposes only. While we do not doubt the floor plan accuracy, we make no guarantee, warranty or representation as to the accuracy and completeness of the floor plan.



## London branches open six days a week Mon - Sat

Canary Wharf | City | Colindale | Dartmouth Park | Ealing | Fulham  
Hammersmith | Hampstead | Highgate | Hyde Park | Kensington | Kew  
Knightsbridge | Nine Elms | Shoreditch | Southall | Surrey Quays  
Wapping | Wembley | White City | Woolwich

## International offices

China | Hong Kong SAR | India | Indonesia | Qatar | Malaysia | Middle East |  
Singapore | South Africa | Thailand | Turkey



Benham & Reeves