



Benham & Reeves

Westbourne Apartments, Fulham Riverside, SW6

£646 per week, £2,800 per month + fees

 1 Bedroom  1 Bathroom  Unfurnished

A bright and airy unfurnished apartment with impressive views of the River Thames and close to the amenities of The King's Road. Fulham Broadway is a short journey away.

Please [click here](#) for full detail

Property features

Spacious 1 bedroom | Modern finishes | High-end integrated appliances | Residents gym overlooking the Thames River | Floor to ceiling windows | EPC- C | 24/7 Concierge | Air conditioning | Unfurnished | Manicured communal gardens

For more information about this property,
please call our Fulham branch on

020 7348 7620

Redress & Client Money Protection :

Benham and Reeves are members of The Property Ombudsman redress scheme and have Client Money protection with ARLA Propertymark. You can find more information on our website at <https://www.benhams.com/membership/>



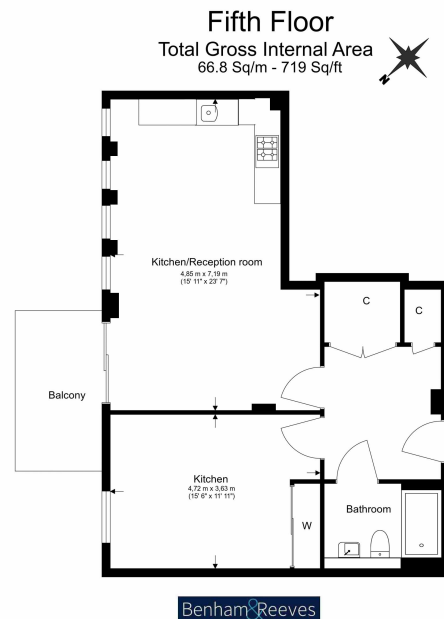
Benham & Reeves



Westbourne Apartments, Fulham Riverside, SW6

www.benhams.com

£646 per week, £2,800 per month + fees



Floor Plan measurements are approximate and are for illustrative purposes only. While we do not doubt the floor plans accuracy, we make no guarantee, warranty or representation as to the accuracy and completeness of the floor plan.

Score	Energy rating	Current	Potential
92+	A		
81-91	B		
69-80	C	78 C	78 C
55-68	D		
39-54	E		
21-38	F		
1-20	G		

London branches open six days a week Mon - Sat

Canary Wharf | City | Colindale | Dartmouth Park | Ealing | Fulham
Hammersmith | Hampstead | Highgate | Hyde Park | Kensington | Kew
Knightsbridge | Nine Elms | Shoreditch | Southall | Surrey Quays
Wapping | Wembley | White City | Woolwich

International offices

China | Hong Kong SAR | India | Indonesia | Qatar | Malaysia | Middle East |
Singapore | South Africa | Thailand | Turkey



Benham & Reeves