



Benham & Reeves

Ravensbourne Apartments, Fulham Riverside, SW6

£600 per week, £2,600 per month + fees

 2 Bedrooms  2 Bathrooms  Furnished

Spacious luxury apartment situated in a stunning development master planned by award winning firm of architects, Lifshutz Davidson Sandilands. Located a short walk from Chelsea Harbour with excellent transport Links.

Please [click here](#) for full detail

Property features

2 Bedroom | 2 Bathroom | Reception | Furnished | Fitted Kitchen | EPC-B | Underfloor Heating | Lifts to all floors | Nearby Imperial Wharf Overground

For more information about this property, please call our Fulham branch on

020 7348 7620

Redress & Client Money Protection :

Benham and Reeves are members of The Property Ombudsman redress scheme and have Client Money protection with ARLA Propertymark. You can find more information on our website at <https://www.benhams.com/membership/>



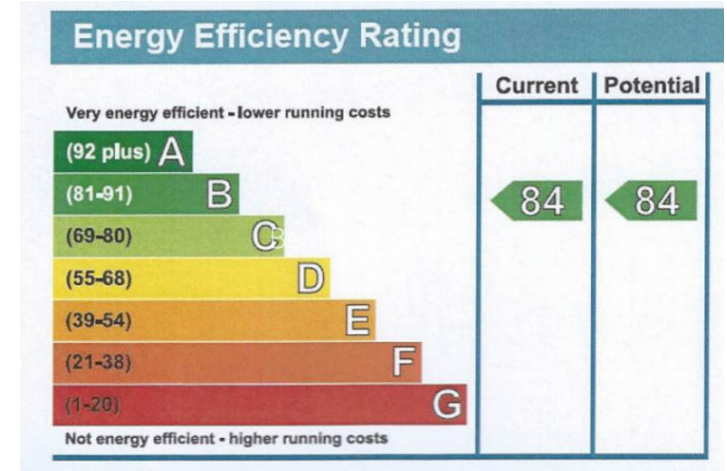
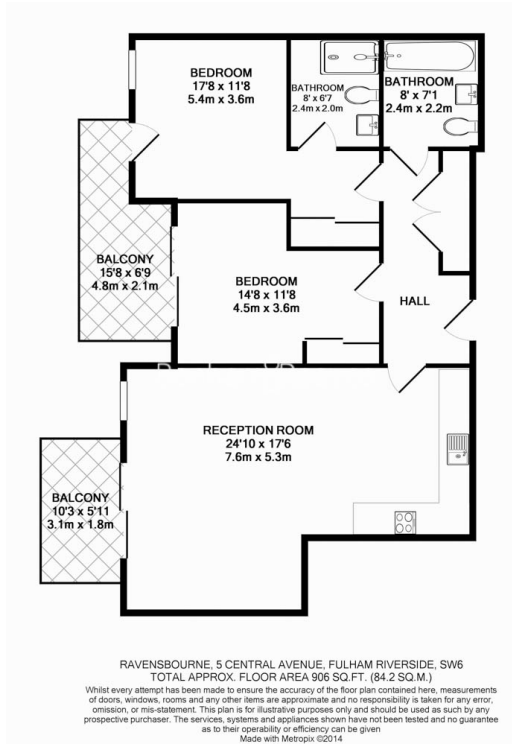
Benham & Reeves



Ravensbourne Apartments, Fulham Riverside, SW6

www.benhams.com

£600 per week, £2,600 per month + fees



London branches open six days a week Mon - Sat

Canary Wharf | City | Colindale | Dartmouth Park | Ealing | Fulham
Hammersmith | Hampstead | Highgate | Hyde Park | Kensington | Kew
Knightsbridge | Nine Elms | Shoreditch | Southall | Surrey Quays
Wapping | Wembley | White City | Woolwich

International offices

China | Hong Kong SAR | India | Indonesia | Qatar | Malaysia | Middle East |
Singapore | South Africa | Thailand | Turkey

