



Benham&Reeves

Pelham Court, Fulham Road, Chelsea, SW3

£700 per week, £3,033 per month + fees

 1 Bedroom  1 Bathroom  Furnished

A gorgeous 564 Sq Ft, 4th Floor ONE-BEDROOM apartment with direct views over the beautiful, countryside-inspired COMMUNAL GARDEN and situated in one of Chelsea's most sought-after buildings - PELHAM COURT. Newly redecorated, residents also benefit from a DAYTIME PORTER, LIFT and convenient location just 5 MINUTES from SOUTH KENSINGTON UNDERGROUND STATION.

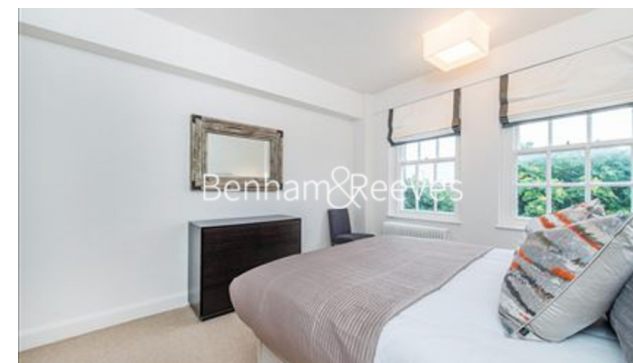
Please [click here](#) for full detail

Property features

1 Bedroom | 1 Bathroom | Reception | Furnished/UF | Garden | EPC-D | 564 sq ft | Daytime Porter, Lift, Dedicated Maintenance Team | Stunning Communal Gardens | South Kensington Underground

For more information about this property,
please call our Knightsbridge branch on

020 7581 2112



Redress & Client Money Protection :

Benham and Reeves are members of The Property Ombudsman redress scheme and have Client Money protection with ARLA Propertymark. You can find more information on our website at <https://www.benhams.com/membership/>

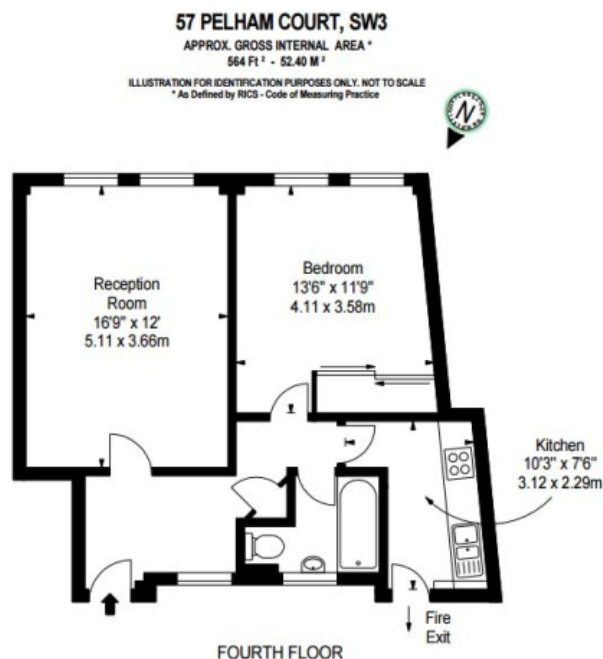
Benham & Reeves



Pelham Court, Fulham Road, Chelsea, SW3

£700 per week, £3,033 per month + fees

www.benhams.com



Score	Energy rating	Current	Potential
92+	A		
81-91	B		
69-80	C		
55-68	D	61 D	66 D
39-54	E		
21-38	F		
1-20	G		

London branches open six days a week Mon - Sat

Canary Wharf | City | Colindale | Dartmouth Park | Ealing | Fulham
Hammersmith | Hampstead | Highgate | Hyde Park | Kensington | Kew
Knightsbridge | Nine Elms | Shoreditch | Southall | Surrey Quays
Wapping | Wembley | White City | Woolwich

International offices

China | Hong Kong SAR | India | Indonesia | Qatar | Malaysia | Middle East |
Singapore | South Africa | Thailand | Turkey



Benham & Reeves