



Benham & Reeves

Copthorne Hotel, Fulham Road, SW6

£1,650 per week, £7,150 per month + fees

 2 Bedrooms  2 Bathrooms  Furnished

Rare spacious 9th floor apartment, with a huge private terrace situated in a desirable Chelsea Village development within walking distance from Fulham Broadway Tube Station.

Please [click here](#) for full detail

Property features

Rare 3 Double Bedroom Apartment with Built-in Wardrobe | Fully Fitted Kitchen Integrated with Well-Known Appliances | Internal Area: 1800Sq Ft / View of London Horizon | Air Ventilation / Underfloor Heating / Air Conditioning | Located in the heart of Chelsea | EPC-B | 24 Hr Concierge / 24 Hr Security / Communal Gardens / Bars | Extra-Large Reception Room with Dining Area & Large Windows | Large roof terrace | Nearby Fulham Broadway Underground station

For more information about this property,
please call our Fulham branch on

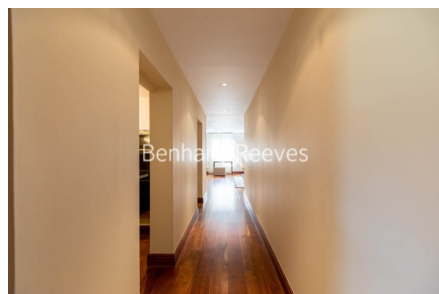
020 7348 7620

Redress & Client Money Protection :

Benham and Reeves are members of The Property Ombudsman redress scheme and have Client Money protection with ARLA Propertymark. You can find more information on our website at <https://www.benhamandreeves.com/membership/>



Benham & Reeves



Copthorne Hotel, Fulham Road, SW6

£1,650 per week, £7,150 per month + fees

www.benhams.com

| Score | Energy rating | Current | Potential |
|-------|---------------|---------|-----------|
| 92+ | A | | |
| 81-91 | B | 81 B | 81 B |
| 69-80 | C | | |
| 55-68 | D | | |
| 39-54 | E | | |
| 21-38 | F | | |
| 1-20 | G | | |

London branches open six days a week Mon - Sat

Canary Wharf | City | Colindale | Dartmouth Park | Ealing | Fulham
Hammersmith | Hampstead | Highgate | Hyde Park | Kensington | Kew
Knightsbridge | Nine Elms | Shoreditch | Southall | Surrey Quays
Wapping | Wembley | White City | Woolwich

International offices

China | Hong Kong SAR | India | Indonesia | Qatar | Malaysia | Middle East | Pakistan
Singapore | South Africa | Thailand | Turkey

