



Benham & Reeves

**Park Street, Fulham, SW6**

£1,795 per week, £7,778 per month + fees

 3 Bedrooms    3 Bathrooms    Furnished

A brand new air-conditioned, 2nd floor apartment with enhanced specification and exclusive health and fitness suite and secure underground parking (by separate negotiation). Located moments from Imperial wharf Overground station and Chelsea Harbour Pier.

Please [click here](#) for full detail

## Property features

**3 Bedrooms | 3 Bathrooms | Reception | Furnished | Fitted Kitchen | EPC-D | 24-hour Concierge Service | Indoor swimming pool, spa and treatment rooms | Nearby Imperial Wharf Overground Station**

For more information about this property, please call our Fulham branch on

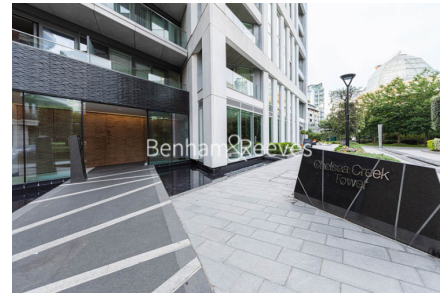
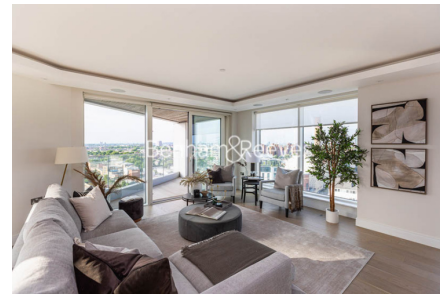
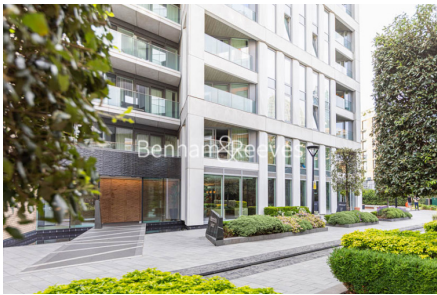
**020 7348 7620**

Redress & Client Money Protection :

Benham and Reeves are members of The Property Ombudsman redress scheme and have Client Money protection with ARLA Propertymark. You can find more information on our website at <https://www.benhams.com/membership/>



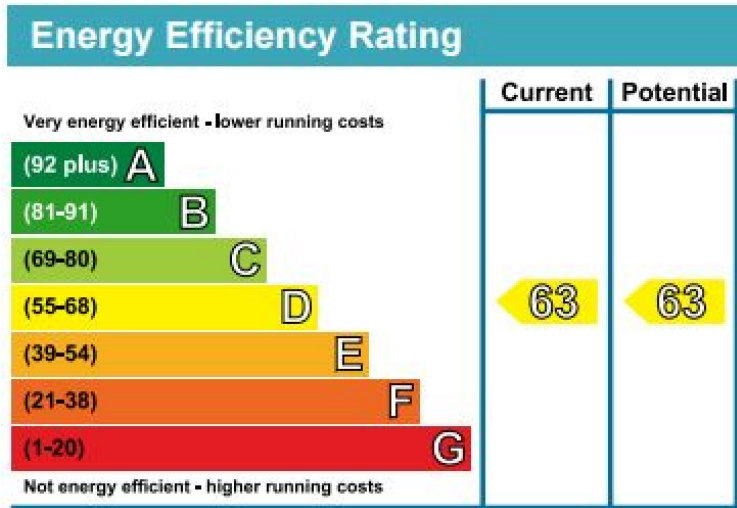
Benham & Reeves



# Park Street, Fulham, SW6

£1,795 per week, £7,778 per month + fees

www.benhams.com



## London branches open six days a week Mon - Sat

Canary Wharf | City | Colindale | Dartmouth Park | Ealing | Fulham  
Hammersmith | Hampstead | Highgate | Hyde Park | Kensington | Kew  
Knightsbridge | Nine Elms | Shoreditch | Southall | Surrey Quays  
Wapping | Wembley | White City | Woolwich

## International offices

China | Hong Kong SAR | India | Indonesia | Qatar | Malaysia | Middle East |  
Singapore | South Africa | Thailand | Turkey

