



Benham & Reeves

Lensbury Avenue, Fulham, SW6

£756 per week, £3,275 per month + fees

 2 Bedrooms  2 Bathrooms 
Furnished/UnFurnished

A spacious, contemporary Riverside 2nd floor apartment with secure underground parking and exclusive residents' fitness centre. Ideally located moments from Imperial Wharf Overground station for excellent transport links PARKING INCLUDED.

Please [click here](#) for full detail

Property features

2 Bedrooms | 2 Bathrooms | Reception | Market the flat as furnished/part-furnished or unfurnished | Fitted Kitchen | EPC-C | 24 Hours Concierge | Two balconies | Parking available via separate negotiation | Nearby Imperial Wharf Station

For more information about this property,
please call our Fulham branch on

020 7348 7620

Redress & Client Money Protection :

Benham and Reeves are members of The Property Ombudsman redress scheme and have Client Money protection with ARLA Propertymark. You can find more information on our website at <https://www.benhams.com/membership/>



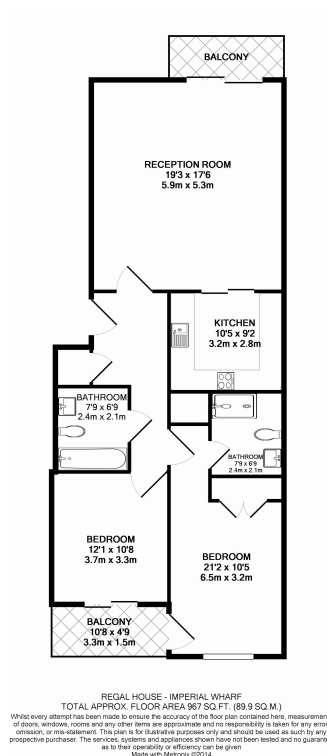
Benham&Reeves



Lensbury Avenue, Fulham, SW6

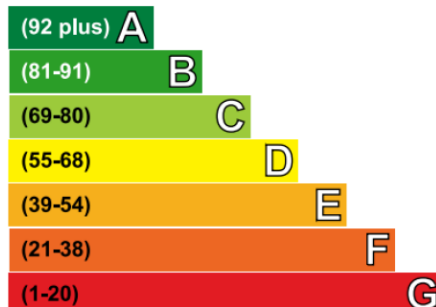
£756 per week, £3,275 per month + fees

www.benhams.com



Energy Efficiency Rating

Very energy efficient - lower running costs



Current	Potential
74	75

London branches open six days a week Mon - Sat

Canary Wharf | City | Colindale | Dartmouth Park | Ealing | Fulham
Hammersmith | Hampstead | Highgate | Hyde Park | Kensington | Kew
Knightsbridge | Nine Elms | Shoreditch | Southall | Surrey Quays
Wapping | Wembley | White City | Woolwich

International offices

China | Hong Kong SAR | India | Indonesia | Qatar | Malaysia | Middle East |
Singapore | South Africa | Thailand | Turkey



Benham & Reeves