



Benham & Reeves

**Townmead Road, Fulham, SW6**

£520 per week, £2,253 per month + fees

 1 Bedroom     1 Bathroom     Furnished

Spacious fourth floor air-conditioned apartment located in a sought-after riverside development with on-site gym and Imperial Wharf Overground Station

Please [click here](#) for full detail

## Property features

**1 Double Bedroom Apartment with Built-in Wardrobe(4th Floor) | Fully Fitted Kitchen Integrated with Well-Known Appliances | 24 Hr Concierge / 24 Hr Security / Communal Gardens / Bars | Double Reception Room with Dining Area & Large Windows | Luxurious Bathroom (with Plenty of Storage) | EPC-B | Residents Gym | Furnished throughout | Large Private Balcony | Nearby Imperial Wharf Overground Station**

For more information about this property, please call our Fulham branch on

**020 7348 7620**

Redress & Client Money Protection :

Benham and Reeves are members of The Property Ombudsman redress scheme and have Client Money protection with ARLA Propertymark. You can find more information on our website at <https://www.benhams.com/membership/>



**Benham & Reeves**



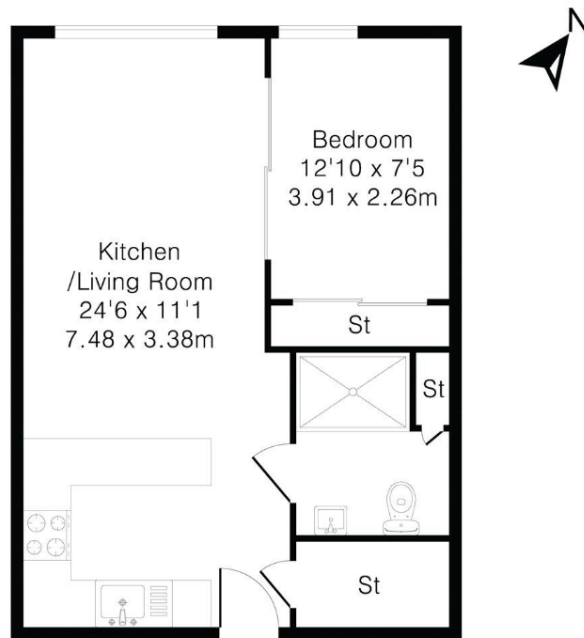


# Townmead Road, Fulham, SW6

£520 per week, £2,253 per month + fees

www.benhams.com

Approximate Gross Internal Area 435 sq ft – 40 sq m



Score	Energy rating	Current	Potential
92+	A		
81-91	B	83   B	87   B
69-80	C		
55-68	D		
39-54	E		
21-38	F		
1-20	G		

## London branches open six days a week Mon - Sat

Canary Wharf | City | Colindale | Dartmouth Park | Ealing | Fulham  
 Hammersmith | Hampstead | Highgate | Hyde Park | Kensington | Kew  
 Knightsbridge | Nine Elms | Shoreditch | Southall | Surrey Quays  
 Wapping | Wembley | White City | Woolwich

## International offices

China | Hong Kong SAR | India | Indonesia | Qatar | Malaysia | Middle East |  
 Singapore | South Africa | Thailand | Turkey

