



Benham & Reeves

Farm Lane, Fulham, SW6

£1,000 per week, £4,333 per month + fees

 2 Bedrooms  3 Bathrooms  Furnished

Brand-new spacious and contemporary boutique apartment situated in a coveted prestigious development located In The Heart Of Fulham, a short walk from Fulham Broadway Station (District Line).

Please [click here](#) for full detail

Property features

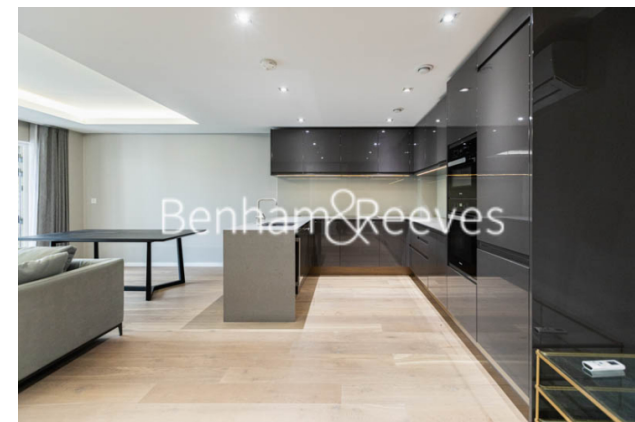
Balcony & wooden floors | 24-hour concierge and residents gym | Two double bedrooms | Master Bedroom With En-Suite Bathroom | Second Bedroom With En-Suite Bathroom | EPC-B | 24-Hour Concierge | 1144 Square Feet (Approx.) | Fitted Wardrobes To Both Bedrooms | Nearby Fulham Broadway Station

For more information about this property,
please call our Fulham branch on

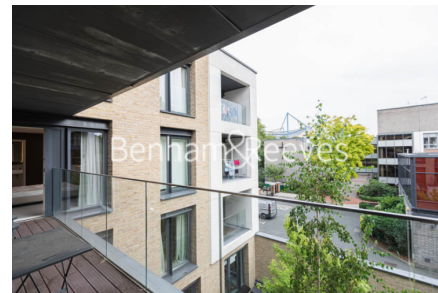
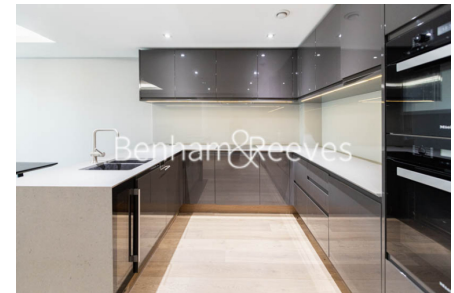
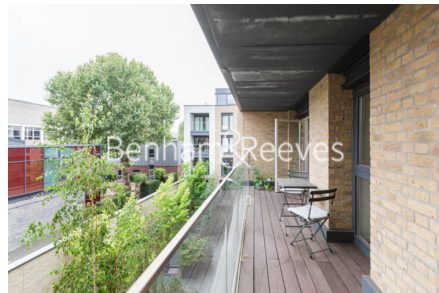
020 7348 7620

Redress & Client Money Protection :

Benham and Reeves are members of The Property Ombudsman redress scheme and have Client Money protection with ARLA Propertymark. You can find more information on our website at <https://www.benhams.com/membership/>



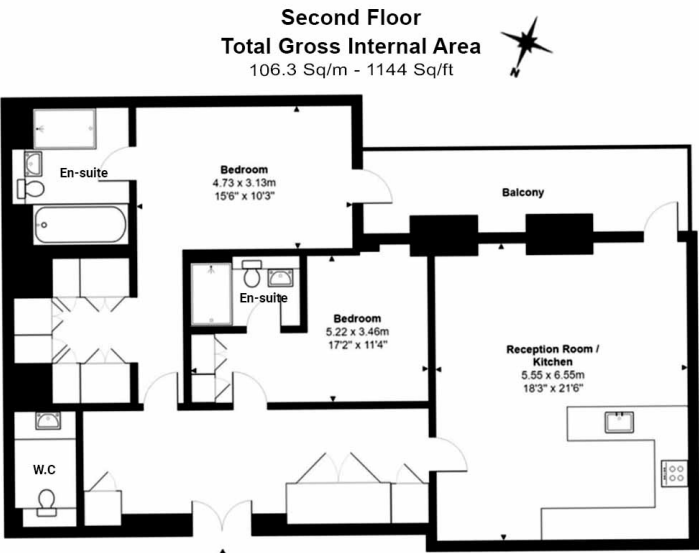
Benham & Reeves



Farm Lane, Fulham, SW6

£1,000 per week, £4,333 per month + fees

www.benhams.com



Floor Plan measurements are approximate and are for illustrative purposes only. While we do not doubt the floor plans accuracy, we make no guarantee, warranty or representation as to the accuracy and completeness of the floor plan.

Score	Energy rating	Current	Potential
92+	A		
81-91	B	87 B	87 B
69-80	C		
55-68	D		
39-54	E		
21-38	F		
1-20	G		

London branches open six days a week Mon - Sat

Canary Wharf | City | Colindale | Dartmouth Park | Ealing | Fulham
Hammersmith | Hampstead | Highgate | Hyde Park | Kensington | Kew
Knightsbridge | Nine Elms | Shoreditch | Southall | Surrey Quays
Wapping | Wembley | White City | Woolwich

International offices

China | Hong Kong SAR | India | Indonesia | Qatar | Malaysia | Middle East |
Singapore | South Africa | Thailand | Turkey

