



Benham&Reeves

Lensbury Avenue, Fulham, SW6

£773 per week, £3,350 per month + fees

 2 Bedrooms  2 Bathrooms  Furnished

A stunning apartment situated in a vibrant Riverside development with a host on on-site amenities, positioned a stone's throw away from Imperial Wharf overground station. EPC-B

Please [click here](#) for full detail

Property features

2 Bedrooms | 2 Bathrooms | Reception | Furnished | Fitted Kitchen | EPC-B | 24 Hour Porter | Wood Floor | Imperial Wharf Overground

For more information about this property,
please call our Fulham branch on

020 7348 7620

Redress & Client Money Protection :

Benham and Reeves are members of The Property Ombudsman redress scheme and have Client Money protection with ARLA Propertymark. You can find more information on our website at <https://www.benhamandreeves.com/membership/>



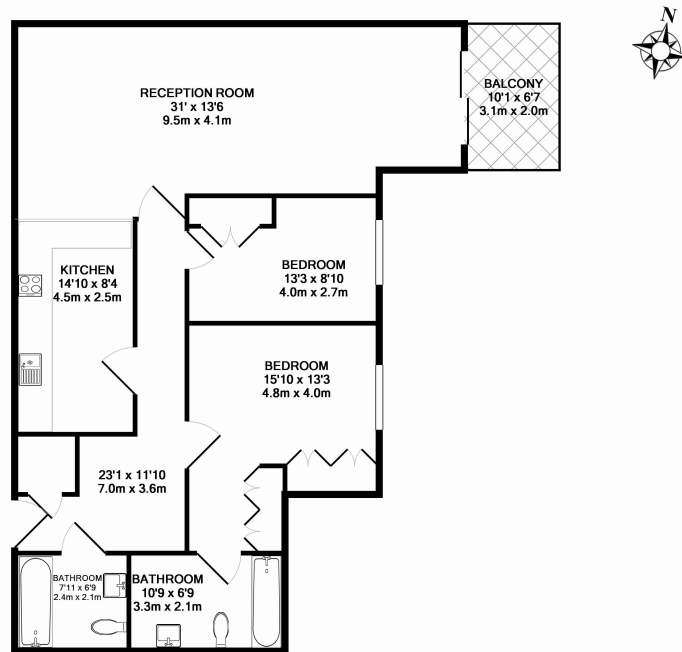
Benham & Reeves



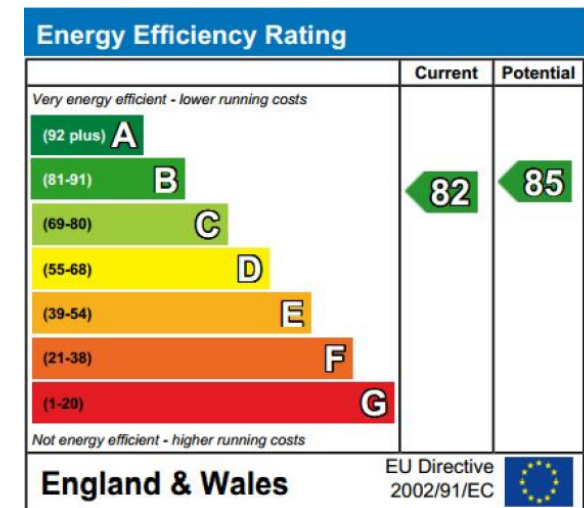
Lensbury Avenue, Fulham, SW6

£773 per week, £3,350 per month + fees

www.benhams.com



00085-7CHIWSW6 - 1ST FLOOR
TOTAL APPROX. FLOOR AREA 1077 SQ.FT. (100.0 SQ.M.)
Whilst every attempt has been made to ensure the accuracy of the floor plan contained here, measurements of doors, windows, rooms and any other items are approximate and no responsibility is taken for any error, omission, or mis-statement. This plan is for illustrative purposes only and should be used as such by any prospective purchaser. The services, systems and appliances shown have not been tested and no guarantee as to their operability or efficiency can be given.
Made with Metropix ©2015



London branches open six days a week Mon - Sat

Canary Wharf | City | Colindale | Dartmouth Park | Ealing | Fulham
Hammersmith | Hampstead | Highgate | Hyde Park | Kensington | Kew
Knightsbridge | Nine Elms | Shoreditch | Southall | Surrey Quays
Wapping | Wembley | White City | Woolwich

International offices

China | Hong Kong SAR | India | Indonesia | Qatar | Malaysia | Middle East | Pakistan
Singapore | South Africa | Thailand | Turkey



Benham & Reeves